

ACCEPTED BY THE HILLSDALE COUNTY SURVEY PEER GROUP AS THE OFFICIAL CORNER UNDER MICHIGAN PUBLIC ACT 345 OF 1890 AT MEETING HELD ON 10-94 AL RINGENBERG, CO. REC.

LIBER 3 PAGE 83 97921

RECORDED HILLSDALE CO. MICH. '94 DEC 14 AM 11 59

REMONUMENTATION LAND CORNER RECORDATION CERTIFICATE Filing Requirement of Act 74, Mich. P.A. 1970

Judy VanZandt REG. OF DEEDS

For corners in

HILLSDALE (County)

Located In: Corner Code #

- 1. Public Land Survey T 5S R 1W
- T R
- T R
- T R
- 2. Property Controlling S T R
- in Section S T R
- 3. Miscellaneous S T R
- Property in Sec. S T R

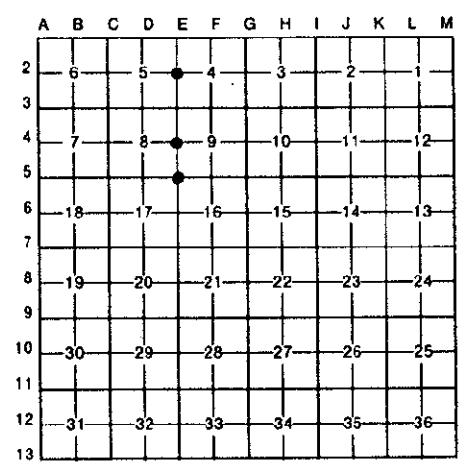
E2 E4, E5

SURVEY & REMONUMENTATION

APR 27 1995

Register of Deeds Stamp & File Number COMMISSION

- 4. Lot No. , Recorded Plat
- 5. Private Claims



I, John E. Maxson, in a field survey on 4 November, 19 94, do hereby certify that under requirements of P.A. 74, Michigan P.A. of 1970, the corner points mentioned in lines 1 and 2 above were in conformance with regulations and rules therefor as required in the current manual of survey instructions of the United States Department of the Interior, Bureau of Land Management or by a decree of a Court of Law and/or that the corner points mentioned in lines 3, 4 and 5 above were in conformance with the rules of the Michigan Board of Land Surveyors or by a Decree of a Court of Law; established, re-established, monumented, re-monumented, recovered, found as expressed below:

NOTE: Not more than 4 corners, all in the same town and range, may be recorded on this certificate.

A. Description of original monument and accessories and/or subsequent restoration:

- E-2 GLO, 1824, 10"B. Oak, is 1/4 Cor Vangieson Survey, 1987, L558, P848 3/4" Pipe
- E-4 GLO, 1824, 10"B.Oak, S24W, 14 lks 6"B.Oak, N67E, 42 lks LCRC, 1978, Richard, L1, P557 1/2" Iron Rod Ringenberg Survey, 1987, L1, P597
- E-5 GLO, 1824, 5"Hickory, N15W, 10 lks 5"Hickory, S13E, 18 lks

B. Description of corner evidence found and/or method applied in restoring or reestablishing corner:

- E-2 Found iron from Recorded Survey and accepted as the best available evidence of the position of the original Corner.
- E-4 Found iron from Richard LCRC and accepted as the best available evidence of the position of the Original Corner
- E-5 Found iron in concrete that checks Plat dimension and accepted as the best available evidence of the position of the original Corner

C. Description of monument for corner and accessories established to perpetuate locating the position of the corner:

- E-2 Reset 5/8 x 36 rebar w/cap N26E 47.50' 8"Maple N81W 37.72' 36"Oak N89W 32.78' Con. Mon S50E 38.68' P.Pole S32W 60.08' 10"Oak
- E-4 Reset 5/8 x 36 rebar w/cap West 82.14' 8"Sassafrass North 102.42' 12"Cherry North 13.18' 6"Cherry N80E 59.27' 6"Cherry
- E-5 Reset 5/8 x 36 rebar w/cap N22W 38.59' 12"Oak S62W 18.73' 18"Oak S89E 19.38' 36"Oak S41E 33.69' 26"Oak

Signed by John E. Maxson Date 12 December 1994
 Surveyor's Michigan License No. 27454

