

ACCEPTED BY THE HILLSDALE COUNTY SURVEY PEER GROUP AS THE OFFICIAL CORNER UNDER MICHIGAN PUBLIC ACT 348 OF 1980 AT A MEETING HELD ON 11-10-94 AL RINGENBERG, CO. REP.

LIBER 3 PAGE 76
REMONUMENTATION

97914

RECORDED
HILLSDALE CO. MICH.

'94 DEC 14 AM 11 59

LAND CORNER RECORDATION CERTIFICATE
Filing Requirement of Act 74, Mich. P.A. 1970

Judy VanZandt
REG. OF DEEDS

For corners in

HILLSDALE
(County)

Located In:

Corner Code #

F5 G3

SURVEY &
REMONUMENTATION

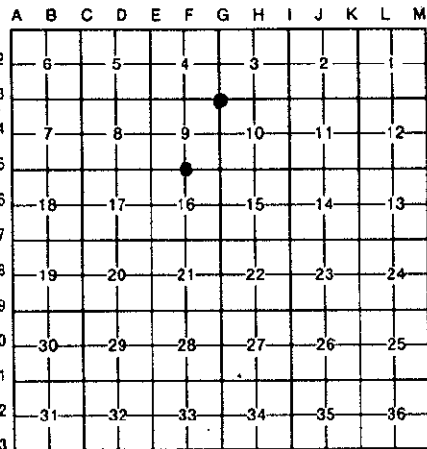
APR 27 1995

COMMISSION

Register of Deeds Stamp & File Number

- 1. Public Land Survey T 5S R 1W
- T R
- T R
- T R
- 2. Property Controlling S T R
- in Section S T R
- 3. Miscellaneous S T R
- Property in Sec. S T R

- 4. Lot No. _____, Recorded Plat _____
- 5. Private Claims _____



I, John E. Maxson, in a field survey on 4 November, 19 94, do hereby certify that under requirements of P.A. 74, Michigan P.A. of 1970, the corner points mentioned in lines 1 and 2 above were in conformance with regulations and rules therefore as required in the current manual of survey instructions of the United States Department of the Interior, Bureau of Land Management or by a decree of a Court of Law and/or that the corner points mentioned in lines 3, 4 and 5 above were in conformance with the rules of the Michigan Board of Land Surveyors or by a Decree of a Court of Law; established, re-established, monumented, re-monumented, recovered, found as expressed below:

NOTE: Not more than 4 corners, all in the same town and range, may be recorded on this certificate.

A. Description of original monument and accessories and/or subsequent restoration:

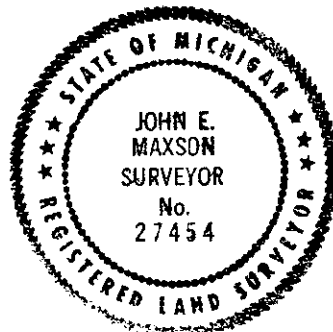
- | | |
|-----------------------------------|-----------------------------------|
| F-5 | G-3 |
| GLO, 1824, 10"W.Oak, S50E, 61 lks | GLO, 1824, 14"B.Oak, S72E, 30 lks |
| 16"W.Oak, South, 69 lks | 14"B.Oak, S33W, 33 lks |
| LCRC, 1978, Berning, L1, P576 | LCRC, 1986, VanGieson, L2, P71 |
| Stone | 3/4" Pipe |

B. Description of corner evidence found and/or method applied in restoring or reestablishing corner:

- | | |
|------------------------------------|------------------------------------|
| F-5 | G-3 |
| Found stone from Berning LCRC | Found iron from Vangieson LCRC |
| and accepted as the best available | and accepted as the best available |
| evidence of the position of the | evidence of the position of the |
| original Corner | original Corner |

C. Description of monument for corner and accessories established to perpetuate locating the position of the corner:

- | | |
|----------------------------|----------------------------|
| F-5 | G-3 |
| Reset 5/8 x 36 rebar w/cap | Reset 5/8 x 36 rebar w/cap |
| N51E 33.9' 10"Hickory | N50E 26.93' 12"Cherry |
| S32E 35.2' 20"Hickory | S10W 64.02' 12"Pine |
| S80W 28.4' 10"Ash | N45W 33.85' 36"Maple |
| N22W 34.2' 30"Oak | N15W 68.20' 30"Maple |



12 December, 1994

Signed by *John E. Maxson* Date _____
Surveyor's Michigan License No. 27454