

ACCEPTED BY THE HILLSDALE COUNTY SURVEY PEER GROUP AS THE OFFICIAL CORNER UNDER MICHIGAN PUBLIC ACT 346 OF 1990 AT A MEETING HELD ON 11-10-94 AL RINGENBERG, CL. REP.

LIBER 3 PAGE 81  
REMONUMENTATION

97919

RECORDED  
HILLSDALE CO. MICH.  
'94 DEC 14 AM 11 59

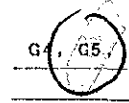
LAND CORNER RECORDATION CERTIFICATE  
Filing Requirement of Act 74, Mich. P.A. 1970

*Judy VanZandt*  
REG. OF DEEDS

For corners in

HILLSDALE (County) Located In: Corner Code #/

1. Public Land Survey	T 5S R 1W	G 4, G 5
	T R	
	T R	
	T R	
2. Property Controlling in Section	S T R	
	S T R	
3. Miscellaneous Property in Sec.	S T R	
	S T R	
4. Lot No. _____, Recorded Plat _____		
5. Private Claims _____		



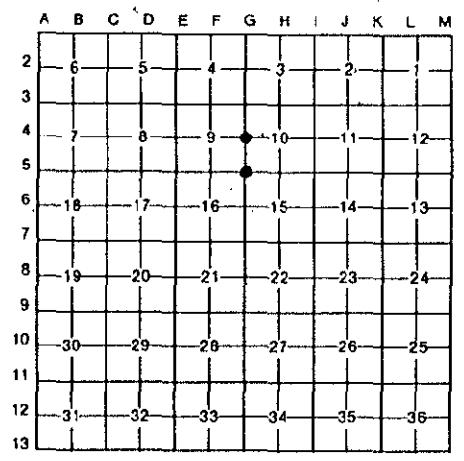
SURVEY & REMONUMENTATION

APR 27 1995

COMMISSION

Register of Deeds Stamp & File Number

I, John E. Maxson in a field survey on 4 November, 19 94 do hereby certify that under requirements of P.A. 74, Michigan P.A. of 1970, the corner points mentioned in lines 1 and 2 above were in conformance with regulations and rules therefore as required in the current manual of survey instructions of the United States Department of the Interior, Bureau of Land Management or by a decree of a Court of Law and/or that the corner points mentioned in lines 3, 4 and 5 above were in conformance with the rules of the Michigan Board of Land Surveyors or by a Decree of a Court of Law; established, re-established, monumented, re-monumented, recovered, found as expressed below:



NOTE: Not more than 4 corners, all in the same town and range, may be recorded on this certificate.

A. Description of original monument and accessories and/or subsequent restoration:

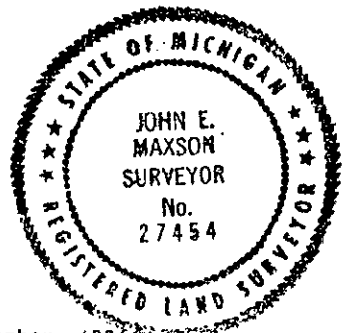
G-4	G-5
GLO, 1824, 12"W.Oak, N01W, 97 lks	GLO, 1824, 20"W.Oak, S50E, 243 lks
10"B.Oak, S88W, 46 lks	20"W.Oak, S46W, 603 lks
LCRC, 1972, Burris, L1, P169	LCRC, 1973, Hatt, L1, P263
Hatt Survey, 1973, L1, P228	3/4" pipe
Iron Rod	Vangieson Survey, 1990, L819, P488
LCRC, 1986, VanGieson, L2, P71	1/2" pipe
1/2" Iron Rod	

B. Description of corner evidence found and/or method applied in restoring or reestablishing corner:

G-4	G-5
Found iron from VanGieson LCRC and accepted as the best available evidence of the position of the original Corner	Found Iron from VanGieson Survey and accepted as the best available evidence of the position of the original Corner

C. Description of monument for corner and accessories established to perpetuate locating the position of the corner:

G-4	G-5
Reset 5/8 x 36 rebar w/cap	Reset 5/8 x 36 rebar w/cap
N60E 45.48' 10" Elm	N60W 185.40' P.Pole
S45E 123.74' 15" Poplar	N10W 133.10' P.Pole
S45W 142.63' P.Pole	N30E 237.59' P.Pole
N60W 315.70' P.Pole	S50E 149.59' 15" Oak



Signed by *John E. Maxson*  
Surveyor's Michigan License No. 27454

Date 12 December, 1994