

APPROVED BY THE HILLSDALE COUNTY SURVEYOR PEER GROUP AS THE OFFICIAL SURVEYOR UNDER MICHIGAN PUBLIC ACT 346 1990 AT A MEETING HELD ON 8-9-94 AT RINGENBERG CO. REP.

LIBER 3, PAGE 85

97923

RECORDED HILLSDALE CO. MICH.

REMONUMENTATION
LAND CORNER RECORDATION CERTIFICATE
 Filing Requirement of Act 74, Mich. P.A. 1970

'94 DEC 14 AM 11 59

Judy VanZandt
 REG. OF DEEDS

For corners in

HILLSDALE
 (County)

Located In: Corner Code #

1. Public Land Survey T 5S R 1W
 T R
 T R
 T R

2. Property Controlling in Section S T R
 S T R

3. Miscellaneous Property in Sec. S T R
 S T R

G9, H1

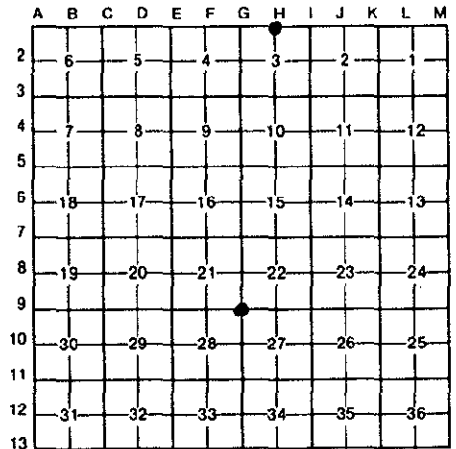
SURVEY & REMONUMENTATION

APR 27 1995

Register of Deeds Stamp & File Number

COMMISSION

4. Lot No. _____, Recorded Plat _____
 5. Private Claims _____



I, John E. Maxson, in a field survey on 4 November, 19 94, do hereby certify that under requirements of P.A. 74, Michigan P.A. of 1970, the corner points mentioned in lines 1 and 2 above were in conformance with regulations and rules therefore as required in the current manual of survey instructions of the United States Department of the Interior, Bureau of Land Management or by a decree of a Court of Law and/or that the corner points mentioned in lines 3, 4 and 5 above were in conformance with the rules of the Michigan Board of Land Surveyors or by a Decree of a Court of Law; established, re-established, monumented, re-monumented, recovered, found as expressed below:

NOTE: Not more than 4 corners, all in the same town and range, may be recorded on this certificate.

A. Description of original monument and accessories and/or subsequent restoration:

G-9	H-1
GLO, 1824, Post, no witnesses	GLO, did not set this corner
	Geo Mark, 1885, Survey No. 998, stone & stake
	LCRC, 1986, Leone, L556, P180
	Harrison Monument

B. Description of corner evidence found and/or method applied in restoring or reestablishing corner:

G-9	H-1
Set Iron at occupation which fits GLO measure and accepted as the best available evidence of the position of the original Corner	Found Harrison Monument from Leone LCRC and accepted as the best available evidence of the position of the original Corner

C. Description of monument for corner and accessories established to perpetuate locating the position of the corner:

G-9	H-1
Set 5/8 x 36 rebar w/cap	Reset 5/8 x 36 rebar w/cap
West 31.11' 54"Oak	S07W 24.12' 15"Hickory Stump
N24W 59.38' 24"Hickory	S01E 22.75' 26"Oak
N34E 49.60' CLROW Marker	S44E 32.15' 6"Hickory
S32E 73.40' NW Cor Hse	S61W 43.13' 4"Spruce
	S77W 75.92' 4"Oak

Signed by John E. Maxson Date 12 December
 Surveyor's Michigan License No. 27454

