

LAND CORNER RECORDATION CERTIFICATE
Filing Requirement of Act 74, Mich. P.A. 1970

For corners in
Hillsdale
 County

Located In: Corner Code //

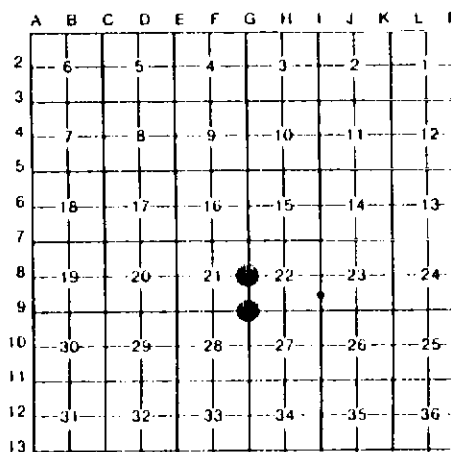
1. Public Land Survey	T	55	R	1W	G8
	T	55	R	1W	G9
	T		R		
	T		R		
2. Property Controlling in Section	S	23	T	55 R 1W	10
	S		T		
3. Miscellaneous Property in Sec.	S		T		
	S		T		

Register of Deeds Stamp & File Number

4. Lot No. _____, Recorded Plat _____
 5. Private Claims _____

10 September 24, 1991
 G9 October 01, 1991

I, Gary C. Bilow, in a field survey on G8 October 01, 1991, do hereby certify that under requirements of P.A. 74, Michigan P.A. of 1970, the corner points mentioned in lines 1 and 2 above were in conformance with regulations and rules therefore as required in the current manual of survey instructions of the United States Department of the Interior, Bureau of Land Management or by a decree of a Court of Law and/or that the corner points mentioned in lines 3, 4 and 5 above were in conformance with the rules of the Michigan Board of Land Surveyors or by a Decree of a Court of Law, established, re-established, monumented, re-monumented, recovered, found as expressed below:



NOTE: Not more than 4 corners, all in the same town and range, may be recorded on this certificate.

A. Description of original monument and accessories and/or subsequent restoration:

G8: Post established by U.S. Deputy Surveyor R. Clark in 1824 - accessories: Hickory 5", S55E 30 links and W. Oak 40", N29E 50 links. Corner notes obtained from J. Maxson, LLS #27454, dated 1990 "Found PK nail over iron" - accessories: N49E 50.22', PK nail in 5" Willow; S85E 32.36', PK nail in railroad fence post; S28W 71.09', PK nail in 32" Oak; S76W 114.52', PK nail in 8" Maple.

G9: Post established by U.S. Deputy Surveyor R. Clark in 1824 - accessories: W. Oak 12", N44E 36 links and W. Oak 12", S22-1/2W 46 links. Corner notes obtained from J. Maxson, LLS #27454, dated 1990 "Dug for stone - nothing, set 1/2" iron at occupation" - accessories: West 31.11', PK in 54" Oak; N24W 59.38', PK in 24" Hickory; N34E 49.6', centerline RDW marker; S32E 73.40', NW corner house.

10: Found no evidence of corner being established.

B. Description of corner evidence found and/or method applied in restoring or reestablishing corner

G8: Found 1/2" iron and recovered three of Maxson's accessories. Accepted iron as the best evidence of the original GLO corner.

G9: Found 1/2" iron and all four of Maxson's accessories. Accepted iron as the best evidence of the original GLO corner.

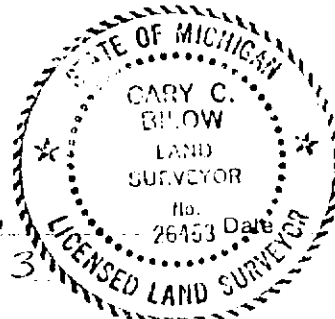
10: Established corner midway on line between corners 18 and 19.

C. Description of monument for corner and accessories established to perpetuate locating the position of the corner:

G8: Found 1/2" iron
 N55E 34.60', nail and tag in 8" Locust
 S85E 32.36', PK nail in RR fence post
 S28W 71.09', PK nail in 22" Maple
 S76W 114.52', PK nail in 8" Maple

G9: Found 1/2" iron
 West 31.11', spike in 54" Oak
 N24W 59.38', PK in 24" Hickory
 N34E 49.6', centerline ROW marker
 S32E 73.40', NW corner house

10: Set 1/2" x 3/8" rebar encased in a 4" diameter concrete cylinder and capped with a cast aluminum Michigan Department of Natural Resources Tablet
 S38E 19.63', spike & tag in twin 4" Maple
 S8E 25.85', spike & tag in quad 4"-16" Maple
 S67W 11.69', spike & tag in 13" Maple
 N50W 45.93', spike & tag in 12" Maple



Signed by Gary C. Bilow
 Surveyor's Michigan License No. 26453

3/31/92