

ACCEPTED BY THE HILLSDALE COUNTY SURVEY PEER GROUP AS THE OFFICIAL CORNER UNDER MICHIGAN PUBLIC ACT 345 OF 1990 AT A MEETING HELD ON 11/11/96 AT AL RINGENBERG, CO. REP.

118405

LIBER 3 PAGE 133
HILLSDALE COUNTY REMONUMENTATION
LAND CORNER RECORDATION CERTIFICATE
Filing Requirement of Act 74, Mich. P.A. 1970

RECORDED
HILLSDALE CO. MICH.
'96 DEC 20 AM 9 09

Judy VanZandt
REG. OF DEEDS

For corners in

Hillsdale (County)	Located In:	Corner Code #
Scipio Twp.		
1. Public Land Survey	T <u>5S</u> R <u>3W</u>	<u>M-4</u>
	T _____ R _____	_____
	T _____ R _____	_____
	T _____ R _____	_____
2. Property Controlling in Section	S _____ T _____ R _____	_____
	S _____ T _____ R _____	_____
3. Miscellaneous Property in Sec.	S _____ T _____ R _____	_____
	S _____ T _____ R _____	_____

Register of Deeds Stamp & File Number

- 4. Lot No. _____, Recorded Plat _____
- 5. Private Claims _____

	A	B	C	D	E	F	G	H	I	J	K	L	M
2	6	5	4	3	2	1							
3													
4	7	8	9	10	11	12							
5													
6	18	17	16	15	14	13							
7													
8	19	20	21	22	23	24							
9													
10	30	29	28	27	26	25							
11													
12	31	32	33	34	35	36							
13													

Frederick J. Cutcher

do hereby certify that under requirements of P.A. 74, Michigan P.A. of 1970, the corner points mentioned in lines 1 and 2 above were in conformance with regulations and rules therefore as required in the current manual of survey instructions of the United States Department of the Interior, Bureau of Land Management or by a decree of a Court of Law and/or that the corner points mentioned in lines 3, 4 and 5 above were in conformance with the rules of the Michigan Board of Land Surveyors or by a Decree of a Court of Law; established, re-established, monumented, re-monumented, recovered, found as expressed below:

NOTE: Not more than 4 corners, all in the same town and range, may be recorded on this certificate.

A. Description of original monument and accessories and/or subsequent restoration:
Original Government Survey by Clark, 1823: 9" W. Oak N. 82° W. 222 lks.; 9" W. Oak S. 30° W. 180 lks. GLO proration places this corner 109 lks. (72.27') South of W. 1/4 Post Sec. 7, Town 5 South, Range 2 West.

Survey #578, 12-1-1870 by George Mark: Stone and brick.
Survey #1063 5-21-1888 by George Mark: 1/4 Post on E. line Sec. 12.
LCRC Liber 1, Page 245, #6315 Dec. 28, 1972 by A. John Hatt, R.L.S. #9208: Fd. long stone at surface broken, from old survey records; 18" Oak N.W. 68.0'; 15" Maple S.W. 80.3'. Set P.K. nail in pavement from witnesses above; Nail N.E. side 42" Oak N. 30° W. 68.0'; Nail N.W. side 34" Maple S. 20° W. 80.3'.

B. Description of corner evidence found and/or method applied in restoring or reestablishing corner:
On 11-6-96 found P.K. nail under seal coat from Hatt's two references above. This corner falls 13' South of centerline of road to West and 80' South of fence to East (Moscow Twp.) Measured distance from this corner to M-5 (see sketch). No stone was found.

Two LCRC witnesses remain.

SURVEY &
REMONUMENTATION
MAY 16 1997
COMMISSION

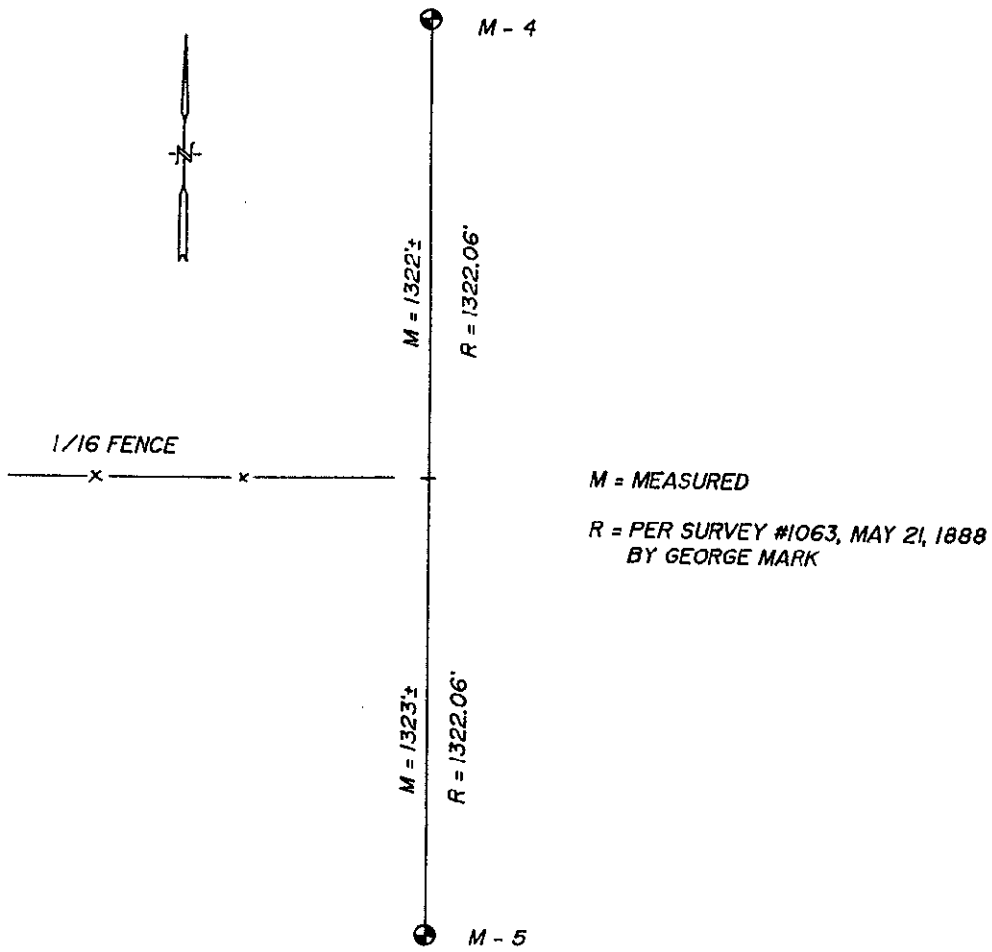
Description of monument for corner and accessories established to perpetuate locating the position of the corner:
Replaced P.K. with Hillsdale County remonumentation bar with cap in monument box and is accepted as best available evidence of the position of the original corner.

3.5' W. of centerline Milnes Road. 13' S. of centerline Jeffery Rd.
N. & S. S.E. side 36" Cherry N. 40° E. 43.11'.
Top center tel. stanchion S. 35° E. 47.06'.
N. & S. N.W. side 36" Maple S. 25° W. 80.28'.
N. & S. N.E. side 36" Oak N. 30° W. 67.73'.



signed by *Frederick J. Cutcher*
Frederick J. Cutcher
Surveyor's Michigan License No. 24592

Date December 19 1996



SURVEY &
REMONUMENTATION

MAY 16 1997

COMMISSION