

ACCEPTED BY THE HILLSDALE COUNTY SURVEY PEER GROUP AS THE OFFICIAL CORNER UNDER MICHIGAN PUBLIC ACT 346 OF 1990 AT MEETING HELD ON 11-10-94
 M. RINGENBERG, C.P. REP.

97401

RECORDED
 HILLSDALE CO. MICH.

'94 NOV 28 AM 11 09

Judy VanZandt
 REG. OF DEEDS

LIBER 3 PAGE 60

REMONUMENTATION
 LAND CORNER RECORDATION CERTIFICATE
 Filing Requirement of Act 74, Mich. P.A. 1970

For corners in
Hillsdale
 (County)

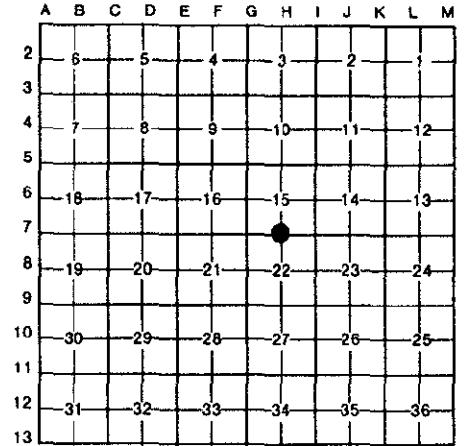
Located In: _____ Corner Code # _____

- 1. Public Land Survey T 5S R 4W
 T _____ R _____
 T _____ R _____
 T _____ R _____
- 2. Property Controlling S _____ T _____ R _____
 in Section S _____ T _____ R _____
- 3. Miscellaneous S _____ T _____ R _____
 Property in Sec. S _____ T _____ R _____

H-7
 SURVEY &
 REMONUMENTATION
 APR 27 1995
 COMMISSION

Register of Deeds Stamp & File Number

- 4. Lot No. _____, Recorded Plat _____
- 5. Private Claims _____



I, Frederick J. Cutcher, in a field survey on October 21, 19 94, do hereby certify that under requirements of P.A. 74, Michigan P.A. of 1970, the corner points mentioned in lines 1 and 2 above were in conformance with regulations and rules therefore as required in the current manual of survey instructions of the United States Department of the Interior, Bureau of Land Management or by a decree of a Court of Law and/or that the corner points mentioned in lines 3, 4 and 5 above were in conformance with the rules of the Michigan Board of Land Surveyors or by a Decree of a Court of Law; established, re-established, monumented, re-monumented, recovered, found as expressed below:

NOTE: Not more than 4 corners, all in the same town and range, may be recorded on this certificate.

A. Description of original monument and accessories and/or subsequent restoration:

- R.E. Burris, LCRC Liber 1, Page 311, July 19, 1973: Found 3/8" iron rod at intersection of Anderson & Herring Road.
- E. R. Reed, LCRC Liber 1, Page 608, Oct. 9, 1979: Found iron rod in monument box, M-49.

B. Description of corner evidence found and/or method applied in restoring or reestablishing corner:

Found 1/2"x18" iron rod in monument box. Monument box was below first layer of pavement. Brought up to surface and replaced iron rod with 3/4"x36" County remonumentation bar and is accepted as a careful and faithful reestablishment of the position of the original corner.

C. Description of monument for corner and accessories established to perpetuate locating the position of the corner:

- 3/4"x36" County remonumentation bar in monument box
- In centerline of intersection of Herring & Anderson Roads.
- Nail & spotter in S.E. side 24" Walnut S. 40° W., 55.55'
- Top nut fire hydrant N. 42° W., 61.40'
- Nail & spotter in S.W. side 24" Maple S. 70° E., 110.40'
- Center of manhole S. 85° W., 38.75'
- N.E. corner building S. 50° W., 110.93'



Signed by Frederick J. Cutcher

Date November 15, 1994

Surveyor's Michigan License No. 24592