

ACCEPTED BY THE HILLSDALE COUNTY SURVEY PEER GROUP AS THE OFFICIAL CORNER UNDER MICHIGAN PUBLIC ACT 348 OF 1997 AT MEETING HELD ON \_\_\_\_\_ AL RINGENBERG, CH. REG.

LIBER 3 PAGE 184

126324

RECORDED

HILLSDALE COUNTY REMONUMENTATION CORNER LAND CORNER RECORDATION CERTIFICATE

HILLSDALE CO. MICH.

Filing Requirement of Act 74, Mich. P.A. 1970 \*97 SEP 22 PM 12 19

For comers in

HILLSDALE		Located In:	Corner Code
#	(County)		
WHEATLAND TWP.			
1. Public Land Survey	T 6 S R 1 W	H-5	
	T ___ R ___		
	T ___ R ___		
	T ___ R ___		
2. Property Controlling in Section	S ___ T ___ R ___		
	S ___ T ___ R ___		
3. Miscellaneous Property in Sec.	S ___ T ___ R ___		
	S ___ T ___ R ___		
4. Lot No. _____	Recorded Plat _____		
5. Private Claims _____			

Judy VanZandt  
REG. OF DEEDS  
SURVEY & REMONUMENTATION

SEP 03 1999

Registration Stamp & File Number

I, EDWARD W. REED, in a field survey on MAY 2, 1997 do hereby state that under requirements of P.A. 74, Michigan P.A. of 1970, the corner points mentioned in lines 1 and 2 above were in conformance with regulations and rules therefore as required in the current manual of survey instructions of the United States Department of the Interior, Bureau of Land Management or by a decree of a Court of Law and /or that the corner points mentioned in lines 3, 4 and 5 above were in conformance with the rules of the Michigan Board of Land Surveyors or by a Decree of a Court of Law; established, re-established, monumented, recovered, found as expressed below:

**NOTE: Not more than 2 corners, all in the same town and range, may be recorded on this certificate.**

A. Description of original monument and accessories and/or subsequent restoration:  
QUARTER CORNER COMMON TO SECTIONS 10-15

1990: JOHN MAXSON, RLS- SET IRON STAKE AT OCCUPATION LINE, RECORDED IN LCRC # 614/650

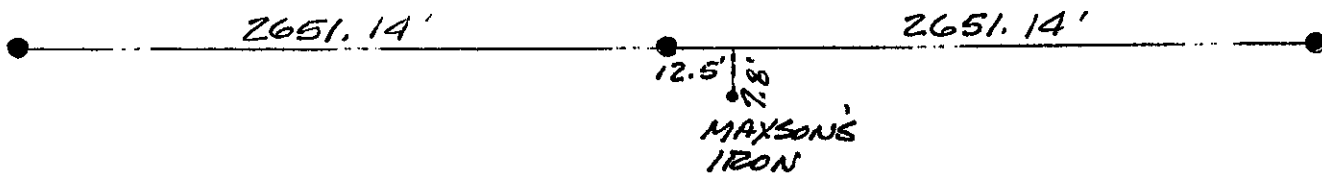
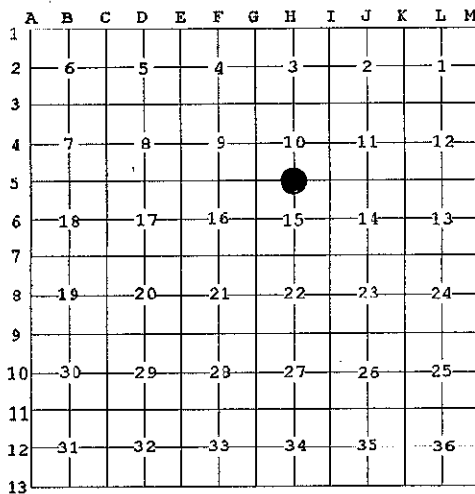
B. Description of corner evidence found and/or method applied in restoring or reestablishing corner:

FOUND MAXSON IRON AT OCCUPATION LINE, MEASURED ALONG SECTION LINE AND SET POINT ON LINE MIDWAY BETWEEN CORNERS DUG LARGE HOLE, UNABLE TO LOCATED ANY EVIDENCE OF CORNER, POINT MISSES MAXSON CORNER BY 12.5 FEET WEST AND 7.8 FEET NORTH. RESET QUARTER CORNER ACCORDING TO BLM PRACTICES AT MIDWAY AND ON LINE BETWEEN SECTION CORNERS.

C. Description of monument for corner and accessories established to perpetuate locating the position of the corner:

SET 3/4"X30" REBAR IRON AND REMON CAP IN CI-MONUMENT BOX 4" BELOW ROAD GRADE

nail & washer S. side 18" double Box Elder	N55E 14.75'
nail & washer N. side 44" Cherry	S35W 38.52'
Nail & washer S. side 30" Maple	N75W 68.13'
nail & washer S. side 30" twin Maple	N82E 77.32'



AND IS ACCEPTED AS A CAREFUL AND FAITHFUL PERPETUATION OF THE POSITION OF THE ORIGINAL CORNER

Signed by Edward W. Reed Date MAY 2, 1997  
EDWARD W. REED  
Surveyor's Michigan License No. 33985

