

127900

RECORDED  
HILLSDALE CO. MICH.

97 NOV 3 PM 4 19

ACCEPTED BY THE HILLSDALE COUNTY SURVEY PEER GROUP AS THE OFFICIAL CORNER UNDER MICHIGAN PUBLIC ACT 345 OF 1993 AT A MEETING HELD ON \_\_\_\_\_  
AL RINGENBERG CO. REP.

LIBER 3 PAGE 212  
HILLSDALE COUNTY REMONUMENTATION CORNER  
LAND CORNER RECORDATION CERTIFICATE  
Filing Requirement of Act 74, Mich. P.A. 1970

*Judy VanZandt*  
REG. OF DEEDS

For corners in

<u>HILLSDALE</u>	Located In:	Corner
Code #		
(County)		
WHEATLAND TWP.		
1. Public Land Survey	T <u>6</u> S R <u>1</u> W	<u>J-5</u>
	T ___ R ___	_____
	T ___ R ___	_____
	T ___ R ___	_____
2. Property Controlling	S ___ T ___ R ___	_____
in Section	S ___ T ___ R ___	_____
3. Miscellaneous	S ___ T ___ R ___	_____
Property in Sec.	S ___ T ___ R ___	_____

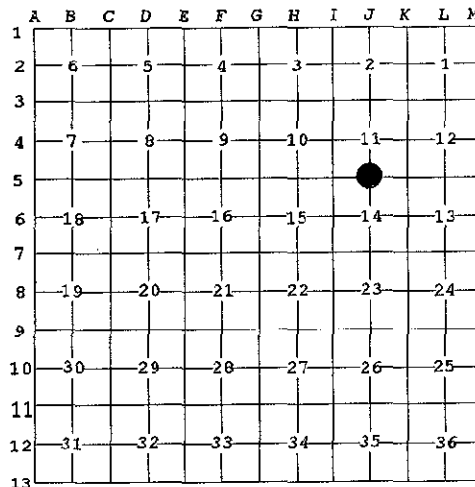
SURVEY & REMONUMENTATION

FEB 11 1998

SECTION  
Register of Deeds Stamp & File Number

4. Lot No. \_\_\_\_\_, Recorded Plat \_\_\_\_\_  
5. Private Claims \_\_\_\_\_

I, EDWARD W. REED, in a field survey on OCTOBER 7, 1997 do hereby state that under requirements of P.A. 74, Michigan P.A. of 1970, the corner points mentioned in lines 1 and 2 above were in conformance with regulations and rules therefore as required in the current manual of survey instructions of the United States Department of the Interior, Bureau of Land Management or by a decree of a Court of Law and /or that the corner points mentioned in lines 3, 4 and 5 above were in conformance with the rules of the Michigan Board of Land Surveyors or by a Decree of a Court of Law; established, re-established, monumented, recovered, found as expressed below:



NOTE: Not more than 2 corners, all in the same town and range, may be recorded on this certificate.

A. Description of original monument and accessories and/or subsequent restoration:  
QUARTER CORNER COMMON TO SECTIONS 11 & 14

NO INFORMATION AVAILABLE SINCE GLO

B. Description of corner evidence found and/or method applied in restoring or reestablishing corner:

DUG LARGE HOLE IN AREA OF CORNER, FOUND NOTHING  
RESET CORNER MIDWAY AND ON LINE BETWEEN SECTION CORNERS EAST & WEST

SET 3/4" X 30" REBAR IRON WITH REMON CAP IN CI-MONUMENT BOX 4" BELOW GRAVEL ROAD SURFACE

C. Description of monument for corner and accessories established to perpetuate locating the position of the corner:

NAIL & WASHER S. SIDE POWER POLE, S83W 243.28'  
NAIL & WASHER N. SIDE POWER POLE, S 50E 87.80'  
NAIL & WASHER IN ROUND FENCE POST MARKING TEL. PED, N80E 61.46'  
SW CORNER OF GARAGE, N65E 285.44'  
C/L OF EAST-WEST ROAD, SOUTH 3.0'

AND IS ACCEPTED AS A CAREFUL AND FAITHFUL PERPETUATION OF THE POSITION OF THE ORIGINAL CORNER

Signed by *Edward W. Reed* Date OCTOBER 7, 1997

EDWARD W. REED

Surveyor's Michigan License No. 33985

