

SURVEY & REMONUMENTATION

DEC 15 1993

877770

LIBER 3 PAGE 12

REMONUMENTATION LAND CORNER RECORDATION CERTIFICATE Filing Requirement of Act 74, Mich. P.A. 1970

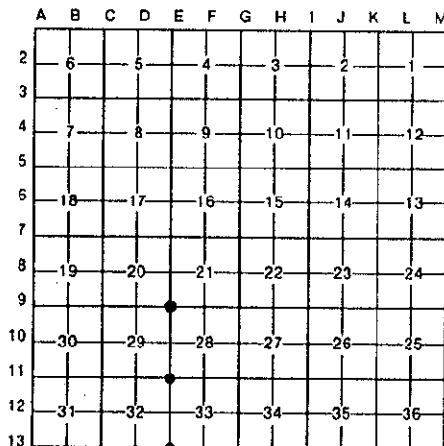
RECORDED
HILLSDALE CO. MICH.
'93 DEC 8 PM 4 42
Judy VanZandt
REG. OF DEEDS

For corners in

<u>HILLSDALE</u> <small>(County)</small>	Located In:	Corner Code #/	
1. Public Land Survey	T <u>6S</u> R <u>3W</u>	E-9, E-11, E-13	
2. Property Controlling in Section	S _____ T _____ R _____		
3. Miscellaneous Property in Sec.	S _____ T _____ R _____		

Register of Deeds Stamp & File Number

4. Lot No. _____, Recorded Plat _____
5. Private Claims _____



I, John E. Maxson, in a field survey on 8 December, 19 93, do hereby certify that under requirements of P.A. 74, Michigan P.A. of 1970, the corner points mentioned in lines 1 and 2 above were in conformance with regulations and rules therefore as required in the current manual of survey instructions of the United States Department of the Interior, Bureau of Land Management or by a decree of a Court of Law and/or that the corner points mentioned in lines 3, 4 and 5 above were in conformance with the rules of the Michigan Board of Land Surveyors or by a Decree of a Court of Law; established, re-established, monumented, re-monumented, recovered, found as expressed below:

NOTE: Not more than 4 corners, all in the same town and range, may be recorded on this certificate.

A. Description of original monument and accessories and/or subsequent restoration:

<p>E-9 GLO, 1823, 11 Hick, N60W, 23 lks 13 Cherry, N44E, 16 lks Co Sur 1868, Stone and Brick 48 Oak, N30E, 49 lks 22 Oak, S88W, 66 lks LCRC, 1975, Boone, L1, P492 2 RR Spikes and Stones Iron at Surface</p>	<p>E-11 GLO, 1823, 13 Oak, S15W, 60 lks 18 Oak, N11W, 168 lks Co Sur 1871, Stone and Brick Stone, N45E, 70 lks LCRC, 1973, Hatt, L1, P249 RR Spike</p>	<p>E-13 GLO, 1823, 10 Beech, N82W, 22 lks 14 Oak, N7E, 12 lks Co Sur 1871, Stone Stone, Brick, N45E, 70 lks and Iron 14 Butternut, S20E, 50 lks LCRC, 1973, Hatt, L1, P307 RR Spike</p>
--	---	--

B. Description of corner evidence found and/or method applied in restoring or reestablishing corner:

<p>E-9 Found iron and one witness from Boone LCRC and accepted as a careful and faithful perpetuation of the original Corner</p>	<p>E-11 Found RR Spike and one witness from Hatt LCRC and accepted as a careful and faithful perpetuation of the original Corner</p>	<p>E-13 Found RR Spike and one witness from Hatt LCRC and accepted as a careful and faithful perpetuation of the original Corner</p>
---	---	---

C. Description of monument for corner and accessories established to perpetuate locating the position of the corner:

<p>E-9 reset 5/8 x 36 rebar with cap in mon. box N30W 33.33' 36"Oak N65E 45.88' 15"Hickory S65E 48.26' 20"Oak S20W 68.83' 8"Oak</p>	<p>E-11 reset 5/8 x 36 rebar with cap in mon. box N15E 101.41' 30"Hickory N40W 41.26' Utility Box S25E 76.63' 6"Crab Apple S55W 58.50' North Sign Post</p>	<p>E-13 reset 5/8 x 36 rebar with cap in mon. box N75W 79.74' P.Pole S05W 25.03' P.Pole S75E 111.36' P.Pole South 62.64' W.Pine</p>
--	---	--

Signed by *John E. Maxson* Date 8 December, 1993
Surveyor's Michigan License No. 27454

