

**SURVEY & REMONUMENTATION**

DEC 15 1993

87767

RECORDED  
HILLSDALE CO. MICH.

LIBER 3 PAGE 9

**COMMISSION REMONUMENTATION  
LAND CORNER RECORDATION CERTIFICATE '93 DEC 8 PM 4 42**

Filing Requirement of Act 74, Mich. P.A. 1970

*Judy VanZandt*  
REG. OF DEEDS

For corners in

HILLSDALE

(County)

Located In:

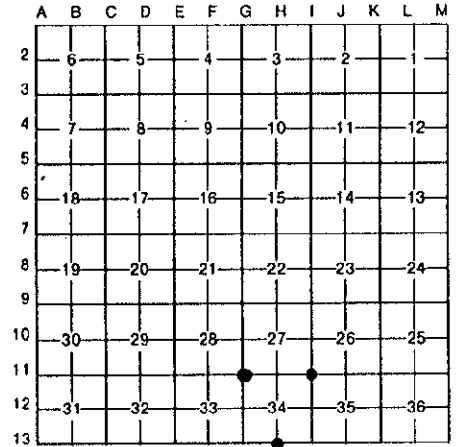
Corner Code //

		6S	3W	G-11, H-13, J-11
1. Public Land Survey	T	.....	R	
	T	.....	R	
	T	.....	R	
	T	.....	R	
2. Property Controlling in Section	S	.....	T	R
	S	.....	T	R
3. Miscellaneous Property in Sec.	S	.....	T	R
	S	.....	T	R
4. Lot No. _____, Recorded Plat _____				
5. Private Claims _____				

Register of Deeds Stamp & File Number

I, John E. Maxson, on 8 December, 1993, in a field survey on \_\_\_\_\_, do hereby certify that under requirements of P.A. 74, Michigan P.A. of 1970, the corner points mentioned in lines 1 and 2 above were in conformance with regulations and rules therefore as required in the current manual of survey instructions of the United States Department of the Interior, Bureau of Land Management or by a decree of a Court of Law and/or that the corner points mentioned in lines 3, 4 and 5 above were in conformance with the rules of the Michigan Board of Land Surveyors or by a Decree of a Court of Law; established, re-established, monumented, re-monumented, recovered, found as expressed below:

**NOTE: Not more than 4 corners, all in the same town and range, may be recorded on this certificate.**



**A. Description of original monument and accessories and/or subsequent restoration:**

<b>G-11</b> GLO, 1823, 8 Sugar, N17W, 25 1ks 11 Sugar, S59E, 41 1ks Co Sur 1871, Stone Stone, North 50 1ks Stone, South 50 1ks LCRC, 1973, Hatt, L1, P249 Bolt	<b>H-13</b> GLO, 1823, 12 Oak, N70E, 27 1ks 15 Oak, N28W, 18 1ks Co Sur 1871, Stone 16 Butternut, N5E, 128 1ks 30 Oak, N85E, 109.5 1ks	<b>J-11</b> GLO, 1823, 5 Oak, S80W, 10 1ks 16 Oak, S6E, 98 1ks Co Sur 1877, Stone LCRC, 1972, Hatt, L1, P85 RR Spike
---	---	---

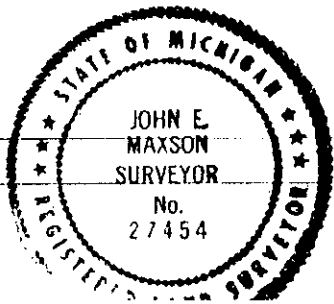
**B. Description of corner evidence found and/or method applied in restoring or reestablishing corner:**

<b>G-11</b> Found bolt and one witness for Hatt, LCRC, and Accepted as a careful and faithful perpetuation of the original Corner	<b>H-13</b> Found stone at fence Corner and Accepted as a careful and faithful perpetuation of the original Corner	<b>J-11</b> Found RR Spike over iron as witnessed from Hatt, LCRC and Accepted as the best available evidence of the position of the original Corner
--	---	---

**C. Description of monument for corner and accessories established to perpetuate locating the position of the corner:**

<b>G-11</b> Reset 5/8 x 36 rebar w/cap in mon. box N85E 52.24' 20"Thickory S10W 19.46' P.Pole N45W 57.59' P.Pole North 33.95' Fence Post	<b>H-13</b> Reset 5/8 x 36 rebar w/cap. North 5.60' 18"Cherry N80E 25.62' 36"Cherry N60W 52.36' 30"Hickory West 13.94 6"Hickory	<b>J-11</b> Reset 5/8 x 36 rebar w/cap in mon. box N14E 70.42' Top Hydrant N58W 33.70' P.Pole S34E 57.95' NW Cor FDI S62E 13.02' P.Pole
---	--	--

Signed by John E. Maxson  
Surveyor's Michigan License No. 27454



Date 8 December, 1993