

ACCEPTED BY THE HILLSDALE COUNTY SURVEY PEER GROUP AS THE OFFICIAL CORNER UNDER MICHIGAN PUBLIC ACT 345 OF 1974. AL RINGENBERG, CO. REP.

107806

RECORDED  
HILLSDALE CO. MICH.  
'95 DEC 21 PM 3 41

LIBER 3 PAGE 113  
REMONUMENTATION  
LAND CORNER RECORDATION CERTIFICATE  
Filing Requirement of Act 74, Mich. P.A. 1970

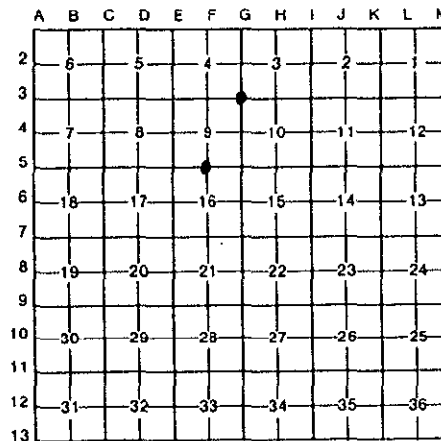
For corners in

Located In: HILLSDALE (County) Corner Code # F-5, G-3

1. Public Land Survey	T <u>7S</u> R <u>2W</u>	<u>F-5, G-3</u>
	T _____ R _____	_____
	T _____ R _____	_____
	T _____ R _____	_____
2. Property Controlling in Section	S _____ T _____ R _____	_____
	S _____ T _____ R _____	_____
3. Miscellaneous Property in Sec.	S _____ T _____ R _____	_____
	S _____ T _____ R _____	_____
4. Lot No. _____, Recorded Plat _____		
5. Private Claims _____		

*Judy VanZandt*  
REG. OF DEEDS  
JAN 30 1996  
Register of Deeds Stamp & File Number  
COMMISSION

I, JOHN MAXSON, in a field survey on 28 NOVEMBER, 1995, do hereby certify that under requirements of P.A. 74, Michigan P.A. of 1970, the corner points mentioned in lines 1 and 2 above were in conformance with regulations and rules therefore as required in the current manual of survey instructions of the United States Department of the Interior, Bureau of Land Management or by a decree of a Court of Law and/or that the corner points mentioned in lines 3, 4 and 5 above were in conformance with the rules of the Michigan Board of Land Surveyors or by a Decree of a Court of Law; established, re-established, monumented, re-monumented, recovered, found as expressed below:



**NOTE: Not more than 4 corners, all in the same town and range, may be recorded on this certificate.**

A. Description of original monument and accessories and/or subsequent restoration:

<b>F-5</b>	<b>G-3</b>	
1825 GLO WILLIAM BROOKFIELD POST SOUTH 27 lks 8" W.OAK N53W 27 lks 12" HICKORY	1825 GLO WILLIAM BROOKFIELD POST N16W 64 lks 10" ELM N34E 52 lks 12" ELM	1876 GEORGE MARK 30" STONE, BRICK, STAKE NO WITNESS
1874 R. BULLARD STONE, BRICK S02W 42.5 lks 6" HICKORY	1871 GEORGE MARK STAKE N27W 119. lks 18" B.ASH N57E 121 lks SWAMP OAK	

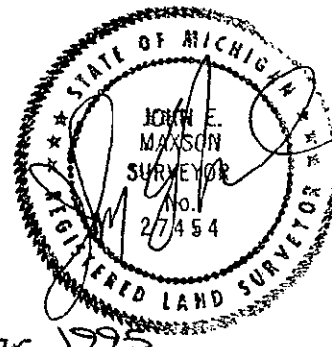
B. Description of corner evidence found and/or method applied in restoring or reestablishing corner:

**F-5**  
DID NOT FIND A STONE AT THE CORNER AS R. BULLARD SET. MEASUREMENTS TAKEN FROM E-5 TO F-5, WHERE F-5 WAS OCCUPATION TO THE SOUTH, WAS 2601.50' COMPARED TO RECORD OF 2594.46'. ALONG WITH THAT, TOOK A MEASUREMENT AT OCCUPATION AT EIGHTH CORNER WHICH IS PROPORTIONATE TO THE MEASUREMENT OF THE HALF MILE MEASUREMENT. ACCEPTED THIS OCCUPATION AS THE BEST AVAILABLE EVIDENCE OF THE POSITION OF THE ORIGINAL CORNER.

**G-3**  
DID NOT FIND THE CORNER AS SET BY GEORGE MARK AND THERE WAS NO OCCUPATION. THE CORNER WAS REESTABLISHED BY SINGLE PROPORTIONATE MEASUREMENT FROM H-3 TO I-3 AND ALONG THAT LINE TO G-3. ACCEPTED AS A CAREFUL AND FAITHFUL REESTABLISHMENT OF THE ORIGINAL CORNER.

C. Description of monument for corner and accessories established to perpetuate locating the position of the corner:

<b>F-5</b>	<b>G-3</b>
SET 5/8" x 36" REBAR W/CAP SOUTH 25.75' FNC. POST N55E 96.00' P.POLE N45W 27.36' WITNESS IRON W/CAP #27454 S45E 36.53' WITNESS IRON W/CAP #27454	SET 5/8" x 36" REBAR W/CAP N19E 54.07' 12" CEDAR N73E 62.48' 16" OAK S29W 144.40' 24" GROUP CHERRY N13W 84.85' 10" ELM



Signed by John E Maxson Date 21 December 1995  
Surveyor's Michigan License No. 27454