

**SURVEY &
REMONUMENTATION**

LIBER 3 PAGE 6

DEC 15 1993

87705

RECORDED
HILLSDALE CO. MICH.

'93 DEC 8 AM 8 47

**REMONUMENTATION
COMMISSION
LAND CORNER RECORDATION CERTIFICATE**
Filing Requirement of Act 74, Mich. P.A. 1970

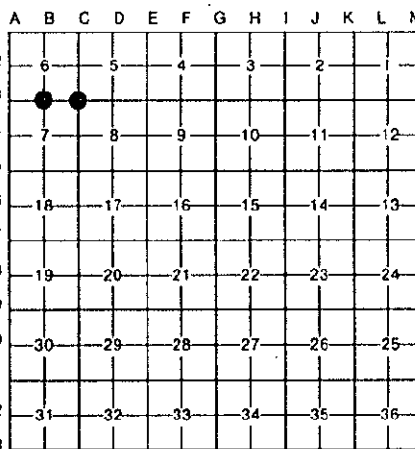
Judy VanZandt
REG. OF DEEDS

For corners in

<u>Hillsdale</u> <small>(County)</small>	Located In:	Corner Code #/
1. Public Land Survey	T 7S R 4W T 7S R 4W T R T R	<u>B-3</u> <u>C-3</u>
2. Property Controlling in Section	S T R S T R	
3. Miscellaneous Property in Sec.	S T R S T R	

Register of Deeds Stamp & File Number

4. Lot No. _____ Recorded Plat _____
5. Private Claims _____



I, R. Timothy Tietsema, in a field survey on November 12, 19 93, do hereby certify that under requirements of P.A. 74, Michigan P.A. of 1970, the corner points mentioned in lines 1 and 2 above were in conformance with regulations and rules therefore as required in the current manual of survey instructions of the United States Department of the Interior, Bureau of Land Management or by a decree of a Court of Law and/or that the corner points mentioned in lines 3, 4 and 5 above were in conformance with the rules of the Michigan Board of Land Surveyors or by a Decree of a Court of Law; established, re-established, monumented, re-monumented, recovered, found as expressed below:

NOTE: Not more than 4 corners, all in the same town and range, may be recorded on this certificate.

A. Description of original monument and accessories and/or subsequent restoration:

- | | |
|---|---|
| B-3)
1823-GLO: Set original corner.
4/16/1888-George A. Marks (Co. Surveyor). Survey No. 1059
Stone and Brick
12" B. Walnut N40.5W 141.75 links (93.56') | C-3)
1823-GLO: Set Original Corner.
10/3/1972-R.E. Burris, Sr. LS#19563: Found Nail
26" Oak S29E 55.85'
14" Willow S42W 63.43' |
| 6/13/1980-F.J. Cutcher LS#24592: Set 1/2" Iron replacing Found R.R. Spike in Centerline of E & W Rd. and in line w/fence to S., Nine (9) feet more or less West of the Centerline of Road to N. | 6/17/1980-F.J. Cutcher LS#24592: Found Large Nail
26" Oak S29E 55.85'
14" Willow S42W 63.43' |

B. Description of corner evidence found and/or method applied in restoring or reestablishing corner:

- | | |
|---|--|
| B-3)
Found 1/2" Iron Rod in Centerline intersection of Bankers Road and the West edge of Pierce Road. | C-3)
Found Square Nail & Washer from the following:
36" Willow S45W 62.84'
30" Oak S25E 54.90' |
|---|--|

C. Description of monument for corner and accessories established to perpetuate locating the position of the corner:

- | | |
|---|--|
| B-3) Section Corner 6 & 7, T7S, R4W
Found 1/2" Iron Rod per Liber 2, Page 34, Hillsdale County, MI, and is accepted as a careful and faithful reestablishment of the position of the original corner. Replaced with a 1" Iron Rod with Hillsdale County Remonumentation Cap.
PK Nail 24" Oak N45W 65.65'
PK Nail 24" Elm N10W 93.50'
PK Nail 18" Cherry N85E 173.21'
Telephone Riser S55W 40.15' | C-3) Section Corner 5, 6, 7 & 8, T7S, R4W
Fnd Sq. Nail & Washer per L. 2, P. 34, Hillsdale Co., MI, and is accepted as a careful and faithful reestablishment of the position of the original corner. Replaced with a 1" Iron Rod with Hillsdale County Remonumentation Cap.
PK Nail 36" Willow S45W 62.84'
PK Nail 30" Oak S25E 54.90'
PK Nail 18" Oak N40W 37.19'
PK Nail 24" Walnut S15W 104.55' |
|---|--|

Signed by *R. Timothy Tietsema* Date December 7, 1993
Surveyor's Michigan License No. 20712

