

118866

RECORDED
HILLSDALE CO. MICH.

'97 JAN 13 AM 11 56

Judy VanZandt
REG. OF DEEDS

LIBER 3 PAGE 160

REMONUMENTATION

LAND CORNER RECORDATION CERTIFICATE
Filing Requirement of Act 74, Mich. P.A. 1970

ACCEPTED BY THE HILLSDALE COUNTY
SURVEY PEER GROUP AS THE OFFICIAL
CORNER UNDER MICHIGAN PUBLIC ACT 345
OF 1990 AT A MEETING HELD ON
AL HINDENBERG, CO. REG.

For corners in
HILLSDALE
(county)

Located in

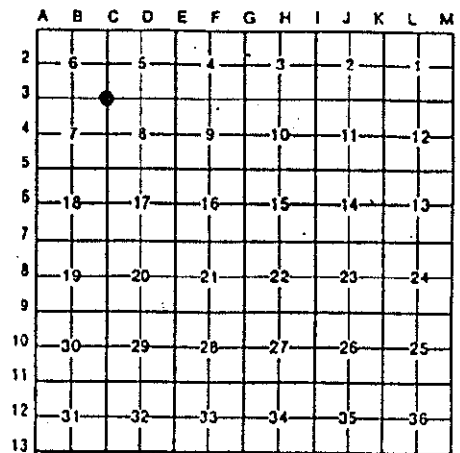
Corner Code #

1. Public Land Survey	T <u>9S</u>	R <u>2W</u>	<u>C-3</u>
	T _____	R _____	_____
	T _____	R _____	_____
	T _____	R _____	_____
2. Property Controlling S	S <u>T</u>	R _____	_____
in Section	S <u>T</u>	R _____	_____
3. Miscellaneous	S <u>T</u>	R _____	_____
Property in Sec.	S <u>T</u>	R _____	_____

Register of Deeds Stamp & File Number

4. Lot No. _____, Recorded Plat _____
5. Private Claims _____

I, R.T. Tietsema, in a field survey on SEPTEMBER 19, 1996, hereby certify that under the requirements of P.A.74, Michigan P.A. of 1970, the corner points mentioned in lines 1 and 2 above were in conformance with the regulations and rules therefore as required in the current manual of survey instructions of the United States Department of the Interior, Bureau of Land Management or by a decree of a Court of Law and/or that the corner points mentioned in lines 3, 4, and 5 above were in conformance with the rules of the Michigan Board of Land Surveyors or by a Decree of a Court of Law; established, re-established, monumented, recovered, found as expressed below.



NOTE: Not more than 4 corners, all in the same town and range, may be recorded on this certificate

A. Description of original monument and accessories and/or restoration:

Set post Corner of Sections 5,6,7, & 8

02/02/1825	GLO (Brookfield)	Fld. Notes	Set Original Corner	1) 12" Elm 2) 12" Red Oak	N11 1/2E S22E	52Links(34.32') 61 links(40.26')
01/18/1881	County Surveyor (G. Mark)	Boundary	Unrecorded	3) 11" Swamp Oak	N56E	108 links(71.28')
11/21/1887	County Surveyor (G. Mark)	Boundary	Unrecorded	4) 11" Swamp Oak	N56E	108 links(71.28')
03/15/67	Unrecorded	Unrecorded	R.R. spike	5) St. Sign 6) I. Fnc. Corner 7) NE Cor. Conc. @ sta. 648+81	S40E N45E	43.37' 31.13' N50W 46.35'
				Culvert Headwall		

B. Description of corner evidence found and/or method applied in restoring or reestablishing corner:

In September 1996, LSC found a R.R. Spike 0.50' South of CL Territorial Rd., with one (1) witness from 1967. Also, angle at S 1/4 corner from "Merry Lake-Eastern Shore's" checks with LSC's measured angle (see sketch).

C. Description of monument for corner and accessories established to perpetuate locating the position of the corner:

Set 1/2" Rebar with Remon. Cap in Mon. Box, established 3 additional witnesses.

7) NE Cor. Conc. Culvert Headwall	S35W	32.34'
8) NW Cor. Conc. Culvert Headwall	S30E	34.08'
9) W end 24" CMP	N27W	37.87'
10) E end 24" CMP	N43W	40.38'

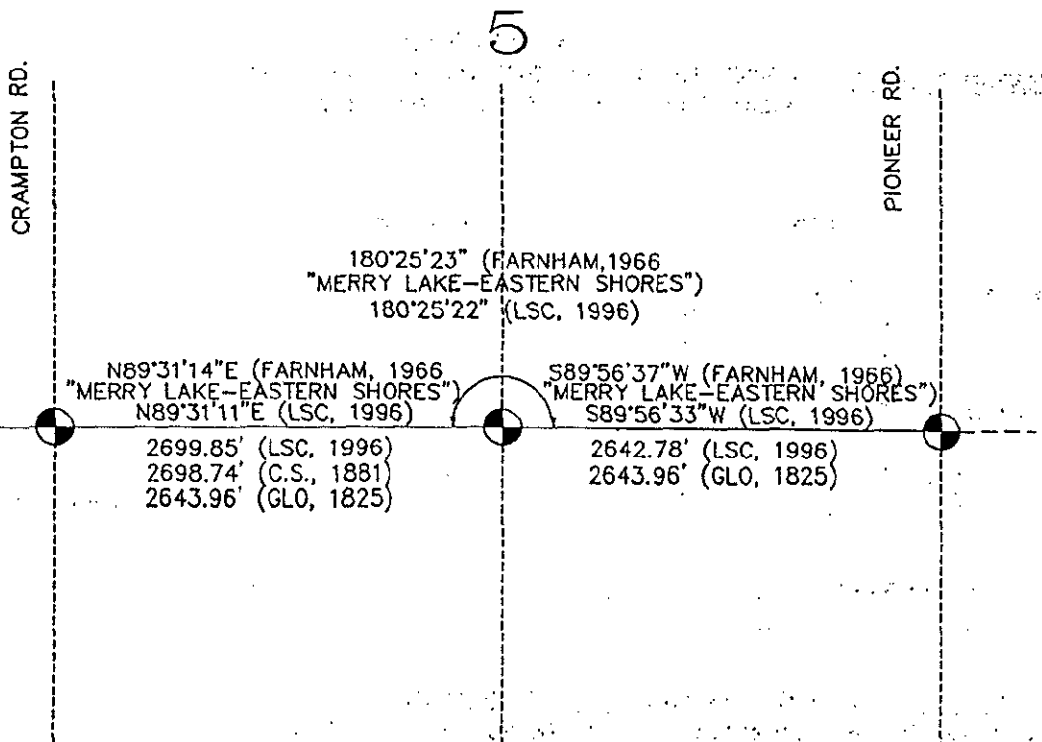
SURVEY &
REMONUMENTATION

MAY 1 6 1997

COMMISSION

It is our opinion that this represents the best evidence of the position of the original corner.

Signed by [Signature] Date DEC 20 1996
Surveyor's Michigan License No. 20712



C-3

FD. R.R. SPIKE

D-3

FD. R.R. SPIKE

E-3

FD. EMPTY MON. BOX

SURVEY &
REMONUMENTATION

MAY 16 1997

COMMISSIONER