

118867

ACCEPTED BY THE HILLSDALE COUNTY SURVEY PEER GROUP AS THE OFFICIAL CORNER UNDER MICHIGAN PUBLIC ACT 348 OF 1990 AT A MEETING HELD ON [Signature] HILLSDALE CO. MICH.

REMONUMENTATION LAND CORNER RECORDATION CERTIFICATE Filing Requirement of Act 74, Mich. P.A. 1970

RECORDED HILLSDALE CO. MICH.

'97 JAN 13 AM 11 56

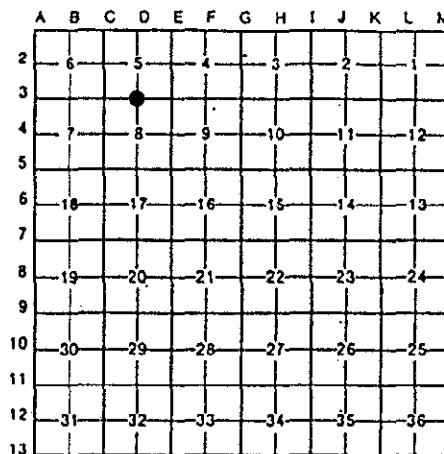
Judy VanZandt REG. OF DEEDS

Table with columns: For corners in HILLSDALE (county), Located In, Corner Code #. Rows include Public Land Survey, Property Controlling in Section, and Miscellaneous Property in Sec.

Register of Deeds Stamp & File Number

4. Lot No. Recorded Plat
5. Private Claims

I, R.T. Tietsema, in a field survey on SEPTEMBER 19, 1996, hereby certify that under the requirements of P.A.74, Michigan P.A. of 1970, the corner points mentioned in lines 1 and 2 above were in conformance with the regulations and rules therefore as required in the current manual of survey instructions of the United States Department of the Interior, Bureau of Land Management...



NOTE: Not more than 4 corners, all in the same town and range, may be recorded on this certificate

A. Description of original monument and accessories and/or restoration:

Table with columns: Date, Description, Location, Evidence, and Details. Includes entries for 02/02/1825, 01/18/1881, and August 1957.

B. Description of corner evidence found and/or method applied in restoring or reestablishing corner:

In September 1996, LSC found a Railroad spike 1.0' North of centerline of Territorial Road 0.10' below asphalt surface and no recorded witnesses. Believed to be same corner shown on said plat (Merry Lake Eastern Shores, see sketch) as angle checks.

C. Description of monument for corner and accessories established to perpetuate locating the position of the corner:

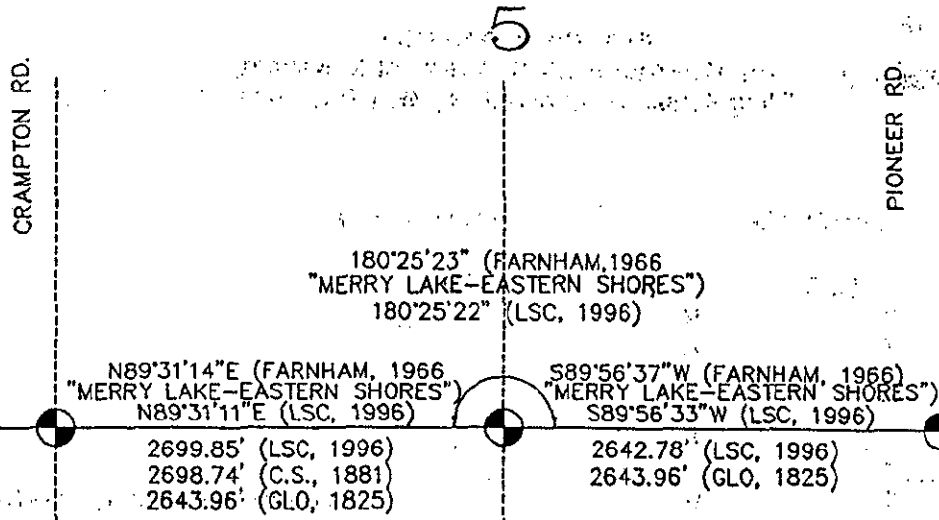
- Set 1/2" Rebar with Remon. Cap in Mon Box, established four (4) witnesses
6) 12" Double-Trunk Elm S10W 36.18' to nail/washer W side
7) Utility Pole N08E 181.72' to nail/washer W side
8) W end 12" CMP N23E 27.12'
9) E end 12" CMP N53E 37.74'

SURVEY & REMONUMENTATION

MAY 16 1997

It is our opinion that this represents the best evidence of the position of the original corner.

Signed by [Signature] Date DEC 20 1996
Surveyor's Michigan License No. 20712



SURVEY & REMONUMENTATION

MAY 16 1997

COMM.