

RECORDED
HILLSDALE CO. MICH.

'97 JAN 13 AM 11 57

ACCEPTED BY THE HILLSDALE COUNTY SURVEY PEER GROUP AS THE OFFICIAL CORNER UNDER MICHIGAN PUBLIC ACT 345 OF 1990. MEETING HELD ON _____
AL RINGENBERG, CO. REP.

REMONUMENTATION
LAND CORNER RECORDATION CERTIFICATE
Filing Requirement of Act 74, Mich. P.A. 1970

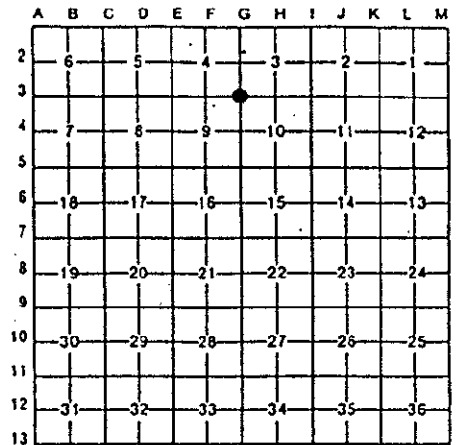
Judy VanZandt
REG. OF DEEDS

For corners in HILLSDALE (county)	Located In	Corner Code #
1. Public Land Survey	T <u>9S</u>	R <u>2W</u> <u>G-3</u>
	T _____	R _____
	T _____	R _____
	T _____	R _____
2. Property Controlling S in Section	S <u>T</u>	R _____
	S <u>T</u>	R _____
3. Miscellaneous Property in Sec.	S <u>T</u>	R _____
	S <u>T</u>	R _____

Register of Deeds Stamp & File Number

4. Lot No. _____, Recorded Plat _____
5. Private Claims _____

I, R.T. Tietsema, in a field survey on SEPTEMBER 19, 1996, do hereby certify that under the requirements of P.A.74, Michigan P.A. of 1970, the corner points mentioned in lines 1 and 2 above were in conformance with the regulations and rules therefore as required in the current manual of survey instructions of the United States Department of the Interior, Bureau of Land Management or by a decree of a Court of Law and/or that the corner points mentioned in lines 3, 4, and 5 above were in conformance with the rules of the Michigan Board of Land Surveyors or by a Decree of a Court of Law; established, re-established, monumented, recovered, found as expressed below.



NOTE: Not more than 4 corners, all in the same town and range, may be recorded on this certificate

A. Description of original monument and accessories and/or restoration:

Set post Corner of Sections 1,6,7, & 12

02/28/1825	GLO (Brookfield)	Fld. Notes	Set Original Corner	1) 12" Elm	S50 1/2E 36 links(23.76')
				2) 8" White Ash	N6 1/2W 22 links(14.52')

B. Description of corner evidence found and/or method applied in restoring or reestablishing corner:

In September 1996, LSC found a boat spike in a monument box 1.4 feet below the road surface, no recorded witnesses were found. Distance's and the angle between corner's G-3, H-3, I-3 check proportionately with GLO.

C. Description of monument for corner and accessories established to perpetuate locating the position of the corner:

Set 1/2" Rebar with Remon Cap in Mon Box, established four (4) witnesses.

- 3) W end 15" CMP N20W 53.30'
- 4) E end 15" CMP N32E 55.27'
- 5) NW cor. conc. headwall S27E 44.29'
- 6) NE cor. conc. headwall S32W 40.07'

It is our opinion that this represents the best evidence of the position of the original corner.

Signed by *R. Tietsema* Date DEC 20 1996
Surveyor's Michigan License No. 20712

SURVEY &
REMONUMENTATION
MAY 16 1997
COMMISSION

