

OCT 26 9 14 AM '94

SURVEY & REMONUMENTATION COMMISSION APR 10 1995

LAND CORNER RECORDATION CERTIFICATE Filing Requirement of Act 74, Mich. P.A. 1970

REGISTER OF DEEDS Bruce Johnson INGHAM COUNTY, MICH.

For corner INGHAM

(County)

Located In:

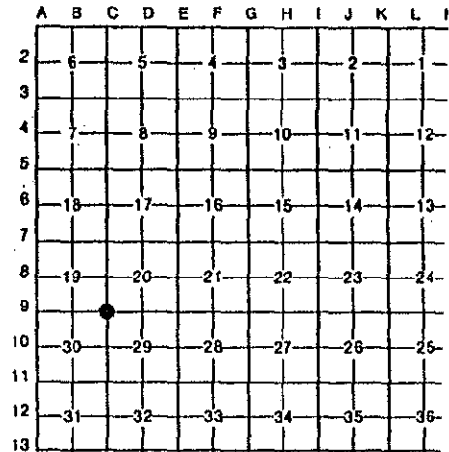
Corner Code #

White Oak Township

Table with 3 columns: Description, Located In (T, R, S, N, E, W, S, T, R), and Corner Code #. Includes entries for Public Land Survey, Property Controlling in Section, and Miscellaneous Property in Sec.

Register of Deeds Stamp & File Number

4. Lot No. , Recorded Plat
5. Private Claims



I, R. W. Steadman, in a field survey on July 28, 1994, do hereby certify that under requirements of P.A. 74, Michigan P.A. of 1970, the corner points mentioned in lines 1 and 2 above were in conformance with regulations and rules therefore as required in the current manual of survey instructions of the United States Department of the Interior, Bureau of Land Management or by a decree of a Court of Law and/or that the corner points mentioned in lines 3, 4 and 5 above were in conformance with the rules of the Michigan Board of Land Surveyors or by a Decree of a Court of Law; established, re-established, monumented, re-monumented, recovered, found as expressed below:

NOTE: Not more than 4 corners, all in the same town and range, may be recorded on this certificate.

A. Description of original monument and accessories and/or subsequent restoration:

- 1). 1825: Wood post set by Joseph Wampler, U. S. Deputy Surveyor; bearing trees: 18" W. Oak S30°E 10 links and 21" W. Oak S27°W 15 links.
2). 1878: Private records of Surveyor John Yocum in possession of Wolverine Engineering Co., Mason MI, call for witnesses: 14" Elm N64-1/4°W 39-1/2 links and 8" Elm N37-1/2°E 52 links.

(Continued on back)

B. Description of corner evidence found and/or method applied in restoring or reestablishing corner:

Found 1/2" iron rod and cap 28414 on N. side of anchor post at intersection of fences South, East, West, and tree line North. Accepted anchor post as best evidence of corner location, and replaced 1/2" rod with standard Ingham County Remonumentation 3/4" iron rod and cap. Did not excavate around anchor post because there is no record of monumentation subsequent to the U. S. Survey. It measures 2644.61 feet West to B-9.



C. Description of monument for corner and accessories established to perpetuate locating the position of the corner:

Set 3/4" smooth iron rod and cap stamped "P.A. 345, PS 11370" to mark the corner and took the following witnesses (bearings are magnetic):

- Found nail and tag 28414 in E. side Fence Post South 3.18 feet
Found nail and tag 28414 in E. side 4" Ash S25°W 8.86 feet
Set nail and tag 11370 in NE side 6" Ash S45°E 5.40 feet
Set nail and tag 11370 in N. side multiple 8" Basswood S88°W 33.70 feet
Set nail and tag 11370 in W. side 8" Elm N05°W 67.81 feet

Signed by Richard W. Steadman Date September 10, 1994

Surveyor's Michigan License No. 11307

2677

P.A. 345 INGHAM COUNTY PEER APPROVED 10/12/94

Part A - Continued

- 3). 10-18-88: Private records of D. L. Clifford L.P.S. 25837, surveying for the subsequently cancelled Supercollider Project, surveyed the east line of Section 19, T2N, R2E, and calls for "fence corner" at this location but did not take any witnesses. He established coordinates for the corners, and computation of distances from them indicates that it is 2647.92 feet North to C-8.
- 4). 6-23-92: Certified Survey Map (Unrecorded), M. H. Mahieu L.P.S. 28414 set a 1/2" iron rod at the north side of a wood anchor post at intersection of fences South, East, and West witnessed by: nail and tag in E. side wood post South 3.15 feet, nail and tag in E. side 4" Walnut S20°W 8.90 feet, nail and tag in E. side 4" Walnut S45°E 5.55 feet, nail and tag in S. side wood post East 15.60 feet. All witnesses found - 1994.