

FEB 22 1996

950002193 Liber 8

Page 507

COMMISSION

LAND CORNER RECORDATION CERTIFICATE  
Filing Requirement of Act 74, Mich. P.A. 1970

For corners in  
INGHAM  
(County)  
LEROY TOWNSHIP

Located In:

Corner Code #

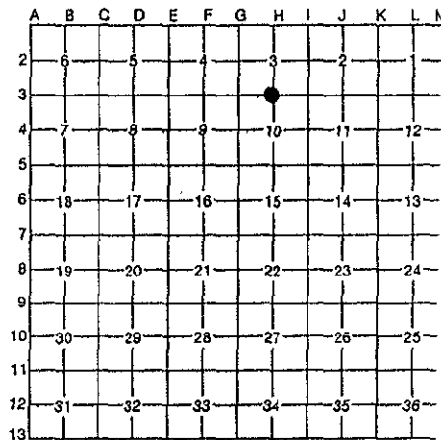
- 1. Public Land Survey T 3N R 2E H-3
- T \_\_\_\_\_ R \_\_\_\_\_
- T \_\_\_\_\_ R \_\_\_\_\_
- T \_\_\_\_\_ R \_\_\_\_\_
- 2. Property Controlling S \_\_\_\_\_ T \_\_\_\_\_ R \_\_\_\_\_
- in Section S \_\_\_\_\_ T \_\_\_\_\_ R \_\_\_\_\_
- 3. Miscellaneous S \_\_\_\_\_ T \_\_\_\_\_ R \_\_\_\_\_
- Property in Section S \_\_\_\_\_ T \_\_\_\_\_ R \_\_\_\_\_

FILED

11/07/1995 09:05:08  
REGISTER OF DEEDS  
PAULA JOHNSON  
INGHAM COUNTY, MI

Register of Deeds Stamp & File Number

- 4. Lot No. \_\_\_\_\_, Recorded Plat \_\_\_\_\_
- 5. Private Claims \_\_\_\_\_



I, DAVID R. LOHR, in a field survey on OCTOBER 12, 19 95, do hereby certify that under requirements of P.A. 74, Michigan P.A. of 1970, the corner points mentioned in lines 1 and 2 above were in conformance with regulations and rules therefore as required in the current manual of survey instructions of the United States Department of the Interior, Bureau of Land Management or by a decree of a Court of Law and/or that the corner points mentioned in lines 3, 4 and 5 above were in conformance with the rules of the Michigan Board of Professional Surveyors or by a Decree of a Court of Law; established, re-established, monumented, re-monumented, recovered, found as expressed below:

NOTE: Not more than 4 corners, all in the same town and range, may be recorded on this certificate.

A. Description of original monument and accessories and/or subsequent restoration:

- H-3: 1. POST SET BY JOS. WAMPLER, D.S., IN 1825, WITNESSED BY:  
BEECH 6" S 84° W, 27 LKS. (17.82')  
BEECH 12" S 7-1/2° E, 11-1/2 LKS. ( 7.59' )
- 2. RECORDED SURVEY BY A. JACKSON, CO. SURVEYOR, DATED 1854, VOL. 1, PG 359, NO MENTION OF MONUMENT, SAME WITNESSES AS ITEM #1.

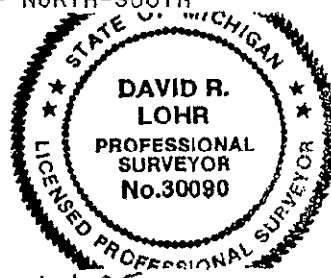
CONTINUED ON BACK

B. Description of corner evidence found and/or method applied in restoring or reestablishing corner:

H-3: VISITED APPARENT LOCATION OF CORNER AND FOUND ONLY A FENCE LINE RUNNING NORTH-SOUTH. NO EVIDENCE VISIBLE AS TO LOCATION OF CORNER. RETRACED FOUTY'S TRAVERSE OF ITEM A:7, AND SET CORNER MIDWAY ON LINE BETWEEN G-3 AND I-3. CORNER FALLS 16 FT. WEST OF NORTH-SOUTH FENCE LINE. FOUND NO EVIDENCE OF ANCIENT OCCUPATION, AS CORNER FALLS IN PLOWED FIELD. SET 3/4" X 24" STANDARD REMON. BAR AND P.A. 345 CAP #30090, 16 FT. WEST OF FENCE.

C. Description of monument for corner and accessories established to perpetuate locating the position of the corner:

- H-3: SET 3/4" X 24' STANDARD REMON BAR AND P.A. 345 CAP 16 FT. WEST OF NORTH-SOUTH FENCELINE AND ON SOUTH SECTION LINE. WITNESSED BY:
- SET N&T #30090 NW/S 4" FENCE POST AZ. 44-40-30 22.31'
- SET 1/2" REBAR IN FENCELINE AZ. 87-08-38 16.16'
- SET N&T #30090 SW/S 4" FENCE POST AZ. 144-00-12 27.72'
- SET N&T #30090 W/S 12" ELM AZ. 174-19-30 153.28'
- TRAV. PT. LE1-23-117, 1/2" IRON/CAP AZ. 272-51-22 633.50'
- BEARING AND DISTANCE TO G-3 AZ. 272-51-22 2681.52'
- BEARING AND DISTANCE TO H-2 AZ. 359-11-36 2650.06'
- BEARING AND DISTANCE TO I-3 AZ. 92-51-22 2681.52'



Signed by David R. Lohr  
Surveyor's Michigan License No. 30090

FORM APPROVED BY MICHIGAN STATE BOARD OF PROFESSIONAL SURVEYORS, JAN. 28, 1971  
REVISED MAY 14, 1975  
REVISED JAN., 1983