

SURVEY & REMONUMENTATION

JAN 18 2001

LAND CORNER RECORDATION CERTIFICATE

Filing Requirement of Act 74, Mich. P.A. 1970

For corners in **SECTION**

INGHAM

(County)

Located In:

Corner Code #

LANSING TOWNSHIP.

1. Public Land Survey

T 4N R 2W

A-1

T _____ R _____

T _____ R _____

T _____ R _____

2. Property Controlling in Section

S _____ T _____ R _____

3. Miscellaneous Property in Sec.

S _____ T _____ R _____

4. Lot No. _____, Recorded Plat

5. Private Claims _____

Paula Johnson
INGHAM COUNTY
REGISTER OF DEEDS
POLARIS SURVEYING CO

RECORDED

L-10 P-32

CRNR 13.00

2000-047313

Register of Deeds Stamp & File Number



2000-047313

Page: 1 of 3

11/07/2000 08:33A

I, DAVID R. LOHR, in a field survey on JUNE 16, 1999, do hereby certify that under requirements of P.A. 74, Michigan P.A. of 1970, the corner points mentioned in lines 1 and 2 above were in conformance with regulations and rules therefore as required in the current manual of survey instructions of the United States Department of the Interior, Bureau of Land Management or by a decree of a Court of Law and/or that the corner points mentioned in lines 3, 4 and 5 above were in conformance with the rules of the Michigan Board of Land Surveyors or by a Decree of a Court of Law; established, re-established, monumented, re-monumented, recovered, found as expressed below:

NOTE: Not more than 2 corners, all in the same town and range, may be recorded on this certificate.

A. Description of original monument and accessories and/or subsequent restoration:

1. CORNER SET BY LUCIUS LYON, U.S. DEPUTY SURVEYOR IN FEBRUARY, 1827.

"INT. WEST BOUNDARY 49 LKS (32.34') S. OF (TEMP) POST AND SET POST FW. A " WITNESSED BY:

BEECH 18", S 41 1/2° E, 50 LKS. (33.00')

SUGAR 20"; S 75 1/2° W, 36 LKS. (23.76')

GLO NOTES SHOW DISTANCE EAST OF 43.88 CH. (2896.08') and 83.80 (5536.08') (DEWITT TWP)

GLO NOTES SHOW DISTANCES NORTH, AND WEST OF 40.00 CH. (2640.00) (WATERTOWN TWP.)

GLO NOTES SHOW DISTANCE SOUTH OF 39.51 CH. (2607.66') TO M-2 AND 79.51 (5247.66') TO M-3 (DELTA TWP)

2. CORNER REFERENCED IN SURVEY IN SECTION 6 OF LANSING TOWNSHIP, DATED MARCH 1, 1865, BY T.J. BROWN, DEP. CO. SURVEYOR AND RECORDED IN BOOK 3, PAGE 7, INGHAM COUNTY SURVEYOR RECORDS. SURVEY SHOWS DISTANCE SOUTH TO A-2 OF 38.93 CH. (2569.38') NO MENTION OF MONUMENT OR WITNESSES GIVEN.

3. CORNER REFERENCED IN SURVEY DATED MAY 10, 1896, BY W.A. ROWE, CO. SURVEYOR, RECORDED IN BOOK 5, PAGE 7. "AN OLD POST WAS FOUND... O.P.F. ... GAS PIPE"

WITNESSED BY: APPLE 12", N 70 E, 26 LKS. (17.16')

APPLE 12", N 86 E, 65 LKS. (42.90')

CONTINUED ON BACK

B. Description of corner evidence found and/or method applied in restoring or reestablishing corner: SEARCHED AT APPARENT LOCATION OF CORNER AND FOUND CLINTON COUNTY REMON. PIPE IN MONUMENT BOX AT C/L OF FRANETTE (OLD WAVERLY ROAD). MON. BOX AND REMON. PIPE ENCASED IN MASSIVE CONCRETE BLOCK AS PER SURVEYOR PIERSON WHO SET REMON. PIPE IN 1993. DID NOT EXCAVATED INTERIOR OF MON. BOX AS THIS CORNER HAS ALREADY BEEN PEER REVIEWED AND APPROVED BY CLINTON COUNTY REMON. PROGRAM. ACCEPTED LOCATION OF FOUND CLINTON COUNTY REMON. PIPE AS STANDARD TOWNSHIP CORNER, PER SURVEYOR PIERSON'S TESTIMONY OF LCRC AS RECORDED IN LIBER 4, PAGE 16, CLINTON COUNTY RECORDS. (UPDATE-7/01/00) AT REQUEST OF INGHAM PEER REVIEW COMMITTEE, I DISCUSSED THIS CORNER WITH SURVEYOR PIERSON. HE INDICATED THIS CORNER LOCATION IS BASED ON THE HISTORICAL LOCATION AS RECOVERED BY MDOT IN 1939 (SEE ITEM A #4). HE RECOVERED A BOATSPIKE WHICH WAS OVER ANOTHER BOATSPIKE AT A DEPTH OF 24". VERIFIED LOCATION OF CORNER BY RECOVERING MONUMENTATION IN PLAT OF CULVERS SUBDIVISION (1925) (SEE ITEM 5, PART A) WHICH LIES IMMEDIATELY WEST AND NORTH OF THIS CORNER. MEASURED WEST 2626.81' TO L-13, WATERTOWN TWP.; EAST 5561.00' TO C-13, DEWITT TWP.; SOUTH 2572.72' TO A-2, LANSING TWP.; AND NORTH 2644.51' TO M-12, WATERTOWN TWP.

C. Description of monument for corner and accessories established to perpetuate locating the position of the corner:

A-1, T4N, R2W, LANSING TOWNSHIP, INGHAM COUNTY. FOUND STANDARD CLINTON COUNTY REMON. PIPE* WITH 2 1/2" ALUMINUM REMON. CAP IN MON. BOX IN FRANETTE ROAD (OLD WAVERLY ROAD). WITNESSED BY:

FD. P.K. NAIL, S/S POWER POLE, N 85° W, 31.65'

FD. N&T #16053, E/S POWER POLE, N 85° W, 31.25'

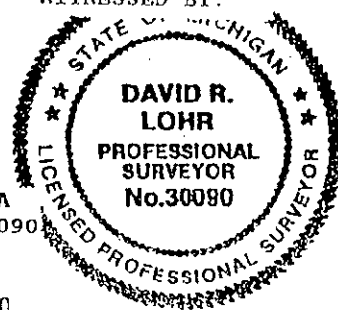
FD. N&T #16053, W/S POWER POLE, S 12° E, 85.10'

FD. N&T #16053, W/S POWER POLE, N 58° E, 32.40'

FD. N&T #16053, W/S POWER POLE, N 61° E, 52.75'

BEARINGS GIVEN ARE MAGNETIC.

*STANDARD CLINTON COUNTY MONUMENT IS A 2 1/2" DIAMETER STEEL TUBE 30" LONG WITH A STAMPED BRASS CAP AND A BREAKAWAY MAGNETIC BASE. BRASS CAP IS STAMPED P.S. 30090



Signed by David R. Lohr

Date OCTOBER 24, 2000

Surveyor's Michigan License No. 30090

SURVEY &
REMONUMENTATION

JAN 18 2001

SECTION

A-1: LANSING TOWNSHIP, PART A CONTINUED:

4. CORNER REFERENCED IN RESURVEY OF LANSING TOWNSHIP, DATED 1909, AND RECORDED IN BOOK 5, PAGE 218, COUNTY SURVEYORS RECORDS, BY R. J. ROBB, "ALL CORNERS ARE MARKED BY CEMENT POSTS 2.5' LONG - 3" SQUARE AT TOP - 4" SQUARE AT BOTTOM." WITNESSED BY:
LOCUST 2" EAST 20'
APPLE 20" N-E 17'
 5. CORNER REFERENCED AS THE SOUTHEAST CORNER OF CULVER'S SUBDIVISION, BY SURVEYOR A.S. BATEMAN, DATED 8/25/1925 AND RECORDED IN LIBER 1 OF PLATS, PAGE 48, CLINTON COUNTY RECORDS. NO REFERENCE TO CORNER MONUMENT, WITNESSED BY PLAT MONUMENT 33 FT. WEST.
 6. MARGINAL NOTE ON EATON COUNTY ROAD COMMISSION COPY OF ORIGINAL NOTES STATES:
"ST. HIGHWAY 1939 - NE COR SEC 1, 3" D. CONC POST & IRON" WITNESSED BY:
18" APPLE, S 78° E, 72.17'
18" APPLE, S 52° E, 52.98'
4" ELM, S 53° W, 33.79'
 7. CORNER REFERENCED IN MSHD PLAN BOOK FOR INGHAM COUNTY AS BEING 2573.47 NORTH OF A-2 (LANSING TWP.) AND 5213.47 FT. NORTH OF A-3, LANSING TOWNSHIP BY STATIONING ALONG AN OFFSET TRAVERSE LINE. NO MENTION OF MONUMENT OR WITNESSES GIVEN.
 8. CORNER NOTED IN UNDATED NOTHSTINE NOTES AS A "3 INCH SQR. CONC. POST RAISED WITH 14" BOAT SPIKE." SAME WITNESSES AS IN ITEM #4 ABOVE.
 9. CORNER REFERENCED IN THE FOLLOWING PLATS RECORDED IN EATON COUNTY:
 - A. "SARATOGA FARMS", BY SURVEYOR FRED N. WHITE, RLS #12034, RECORDED 2/21/64, IN LIBER 4 OF PLATS, PAGE 36.
 - B. "SARATOGA FARMS No.1", BY SURVEYOR FRED N. WHITE, RLS #12034, RECORDED 7/20/65, IN LIBER 4 OF PLATS, PAGE 63.
- ALSO REFERENCED IN THE FOLLOWING PLATS RECORDED IN INGHAM COUNTY:
- A. "MOUNT VERNON PARK" DATED OCT. 13, 1969, BY FRED N. WHITE, RLS #12034 AND RECORDED IN LIBER 29 OF PLATS, PAGE 28.
- "NOTE: NONE OF THE ABOVE PLATS MENTION CORNER MONUMENT OR GIVE WITNESSES.
10. CORNER REFERENCED AS M-1, DELTA TOWNSHIP, IN LCRC DATED MARCH 21, 1973, BY JAMES E. STEPHENS, LAND SURVEYOR #16053, AND RECORDED IN LIBER 1, PAGE 342, EATON COUNTY RECORDS. "A 5/8 INCH IRON ROD IN A MONUMENT BOX WAS FOUND IN THE CENTERLINE OF THE SECTION LINE ROAD (FRANETTE ROAD). "THE 5/8 INCH IRON ROD FOUND AT THE NE CORNER WAS LEFT IN POSITION WITH THE FOLLOWING WITNESSES;"
SURVEY TAG IN THE EAST SIDE OF A UTILITY POLE, N 87° 11' W, 31.29'
SURVEY TAG IN THE WEST SIDE OF A UTILITY POLE, N 56° 37' E, 52.55'
SURVEY TAG IN THE NORTH SIDE OF A UTILITY POLE, S 15° 34' E, 90.60'
THE BEARING OF THE SECTION LINE SOUTH OF THE CORNER IS S 0°01'20"W, BASED ON THE PLAT OF SARATOGA FARMS.
 11. CORNER REFERENCED AS A-1, LANSING TOWNSHIP, IN LCRC DATED AUG. 29, 1973, BY RON HELSEL, RLS #18994, AND RECORDED IN LIBER 2, PAGE 547, INGHAM COUNTY RECORDS. "FOUND MONUMENT BOX WITH BOAT SPIKE AS DESCRIBED IN MDSH WITNESSES." WITNESSED BY:
18" APPLE, S 78° E, 72.17'
18" APPLE, S 52° E, 52.98'
4" ELM, S 53° W, 33.79'
 12. CORNER REFERENCED IN SURVEY BY JOHN A. SELLEK, P.E. AND RLS #02585, DATED AUG. 16, 1973 AND RECORDED IN LIBER 1, PAGE 474. NO MENTION OF MONUMENT OR WITNESSES GIVEN.
 13. CORNER REFERENCED IN SURVEYS BY JAMES STEPHENS, PS #16053, DATED APRIL 6, 1973 AND RECORDED IN LIBER 3, PAGE 328 AND 329, AS "5/8" IRON ROD IN MON. BOX." WITNESSED BY:
SURVEY TAG IN THE EAST SIDE OF A UTILITY POLE, N 87° 11' W, 31.29'
SURVEY TAG IN THE WEST SIDE OF A UTILITY POLE, N 56° 37' E, 52.55'
SURVEY TAG IN THE NORTH SIDE OF A UTILITY POLE, S 15° 34' E, 90.60'
 14. CORNER REFERENCED IN SURVEY BY RONNIE M. LESTER, RLS #18998, DATED 8/1/74 AND RECORDED IN LIBER 1, PAGE 532, CLINTON COUNTY RECORDS, AS SE COR. SECTION 36, T5N, R3W. "FD. BAR IN MON. BOX." WITNESSED BY:
STEPHENS NAIL & TAG, NORTH SIDE POWER POLE, NE, 52.81'
STEPHENS NAIL & TAG, NE SIDE POWER POLE, SSE, 90.54'
P.K. NAIL, SOUTH SIDE POWER POLE, WEST, 31.60'
 15. CORNER REFERENCED IN SURVEY BY JOHN A. SELLEK, P.E. AND RLS #02585, DATED 11/12/79 AND RECORDED IN LIBER 3, PAGE 46. NO MENTION OF MONUMENT OR WITNESSES GIVEN.
 16. CORNER REFERENCED IN SURVEY BY FRED N. WHITE, RLS #12034, DATED APRIL 21, 1980 AND RECORDED IN LIBER 3, PAGE 148. NO MENTION OF MONUMENT OR WITNESSES GIVEN.



2000-047313

Page: 2 of 3

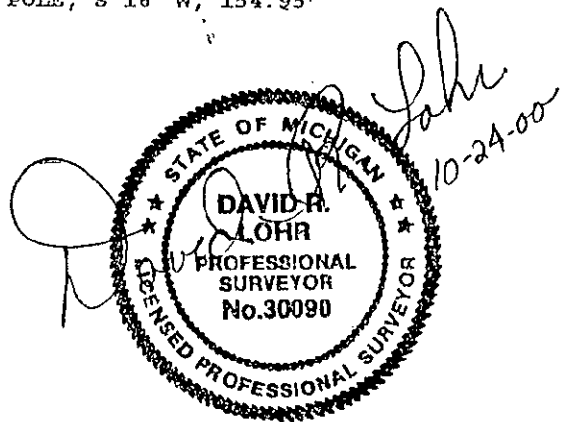
11/07/2000 08:33A

A-1: LANSING TOWNSHIP, PART A CONTINUED: SHEET 3:

17. CORNER REFERENCED AS M-1, DELTA TOWNSHIP, IN LCRC DATED JUNE 28, 1982, BY MAURICE H. MAHIEU, LAND SURVEYOR #28414, AND RECORDED IN LIBER 2, PAGE 799, EATON COUNTY RECORDS. "A 5/8 INCH BOAT SPIKE IN A MONUMENT BOX WAS FOUND IN THE CENTERLINE OF THE SECTION LINE ROAD (FRANETTE ROAD)." "THE 5/8" BOAT SPIKE WAS LEFT IN POSITION WITH THE FOLLOWING WITNESSES:
NAIL AND TAG IN THE EAST SIDE OF A UTILITY POLE, N 86° W, 31.23'
NAIL AND TAG IN THE WEST SIDE OF A UTILITY POLE, N 44° E, 32.51'
NAIL AND TAG IN THE N.W. SIDE OF A UTILITY POLE, N 48° E, 52.84'
NAIL AND TAG IN THE WEST SIDE OF A UTILITY POLE, S 22° E, 85.20'
18. CORNER REFERENCED IN SURVEY BY JAMES STEPHENS, PS #16053, DATED APRIL 12, 1983 AND RECORDED IN LIBER 3, PAGE 573, AS "5/8" BOAT SPIKE IN MON. BOX" WITNESSED BY:
UT. POLE, N 86° W, 31.23'
UT. POLE, N 44° E, 32.51'
UT. POLE, N 48° E, 52.84'
UT. POLE, S 22° E, 85.20'
19. CORNER REFERENCED IN SURVEY BY DOUGLAS K. RICHARDSON, LLS #31603, DATED APRIL 22, 1986 AND RECORDED IN LIBER 4, PAGE 91. NO MENTION OF MONUMENT OR WITNESSES GIVEN. ONLY REFERENCED AS LIBER 2, PAGE 799. SURVEY SHOWS A DISTANCE WEST TO L-1 OF 2643.22.
20. CORNER REFERENCED AS A-1, LANSING TOWNSHIP, IN LCRC DATED OCT. 20, 1986, BY MARK W. WITALEC, LLS #30897, AND RECORDED IN LIBER 6, PAGE 304, INGHAM COUNTY RECORDS. "FOUND BOAT SPIKE IN MON. BOX (TIES IN L.2, PP.547-548 OBLITERATED)" WITNESSED BY:
N.E. 52.81' NAIL & TAG #16053 N.W. SIDE P.P.
S.S.E. 86.16' TAG #16053 W. SIDE P.P.
W. 31.74' P.K. S. SIDE POLE
S.S.W. 154.95' P.K. & CAP #30897 (SET) E. SIDE P.P.
21. CORNER REFERENCED IN PLAT OF SARATOGA FARMS NO. 2, BY MARVIN F. FOUTY, RLS # 18989, DATED 12/05/88, AND RECORDED IN LIBER 11, PAGE 58, EATON COUNTY RECORDS. NO MENTION OF MONUMENT OR WITNESSES GIVEN. PLAT SHOWS DISTANCE WEST TO L-1, DELTA TOWNSHIP OF 2642.55 FT.
22. CORNER REFERENCED IN PLAT OF SARATOGA FARMS NO. 3, BY MARVIN F. FOUTY, RLS # 18989, DATED 09/18/90, AND RECORDED IN LIBER 12, PAGE 3 & 4, EATON COUNTY RECORDS. NO MENTION OF MONUMENT OR WITNESSES GIVEN. PLAT SHOWS DISTANCE WEST TO L-1, DELTA TOWNSHIP OF 2642.55 FT.
23. CORNER REFERENCED AS A-13, DEWITT TOWNSHIP, CLINTON COUNTY, IN LCRC DATED OCT. 21, 1993, BY ARDEN S. PIERSON, LLS #13039, AND RECORDED IN LIBER 4, PAGE 16, CLINTON COUNTY RECORDS. SECTION B STATES: "FOUND BOAT SPIKE IN MONUMENT BOX, VERIFIED WITH MDOT REFERENCE POINT - EXCAVATED BELOW AND FOUND BOATSPIKE BURIED 24" - PLACED STANDARD CLINTON COUNTY MONUMENT AND REPLACED MONUMENT BOX." WITNESSED BY: BOATSPIKE NORTH 77.06'
PK NAIL, S. SIDE TELEPHONE POLE, N 80° W, 31.70'
N & T # 16053 NW SIDE TELEPHONE POLE, N 64° E, 52.83'
N & T # 16053 W SIDE POWER POLE, S 12° E, 85.20'
N & T E. SIDE POWER POLE, S 16° W, 154.95'
24. NO OTHER REFERENCES FOUND.



2000-047313
Page: 3 of 3
11/07/2000 08:33A



SURVEY &
REMONUMENTATION

JAN 18 2001

SECTION