

SURVEY & REMONUMENTATION

JAN 18 2001

LAND CORNER RECORDATION CERTIFICATE

Filing Requirement of Act 74, Mich. P.A. 1970

SECTION

For corners in

INGHAM

(County)

Located In:

Corner Code #

LANSING TOWNSHIP.

1. Public Land Survey

T 4N R 2W

E-3

T R

T R

T R

T R

2. Property Controlling in Section

S T R

3. Miscellaneous Property in Sec.

S T R

4. Lot No.

Recorded Plat

5. Private Claims

Paula Johnson
INGHAM COUNTY
REGISTER OF DEEDS
POLARIS SURVEYING CO

RECORDED

L-10 P-53

CRNR 11.00

2000-047323

Register of Deeds Stamp & File Number



2000-047323

Page: 1 of 2

11/07/2000 08:33A

I, DAVID R. LOHR, in a field survey on MAY 24, 2000, do hereby certify that under requirements of P.A. 74, Michigan P.A. of 1970, the corner points mentioned in lines 1 and 2 above were in conformance with regulations and rules therefore as required in the current manual of survey instructions of the United States Department of the Interior, Bureau of Land Management or by a decree of a Court of Law and/or that the corner points mentioned in lines 3, 4 and 5 above were in conformance with the rules of the Michigan Board of Land Surveyors or by a Decree of a Court of Law; established, re-established, monumented, re-monumented, recovered, found as expressed below:

	A	B	C	D	E	F	G	H	I	J	K	L	M
1													
2	6	5	4	3	2	1							
3													
4	7	8	9	10	11	12							
5													
6	18	17	16	15	14	13							
7													
8	19	20	21	22	23	24							
9													
10	30	29	28	27	26	25							
11													
12	31	32	33	34	35	36							
13													

NOTE: Not more than 2 corners, all in the same town and range, may be recorded on this certificate.

A. Description of original monument and accessories and/or subsequent restoration:

1. CORNER SET BY MUSCROVE EVANS, U.S. DEPUTY SURVEYOR IN MARCH OF 1827. "SET POST COR. TO SECS. 4, 5, 8 & 9" WITNESSED BY:

BEECH 10", N 23° E, 24 LKS. (15.84')

DO 12", S 27° W, 31 LKS. (20.46')

GLO NOTES SHOW DISTANCES NORTH AND SOUTH OF 40 CH. (2640), EAST OF 39.95 CH. (2636.70') AND WEST OF 39.90 CH. (2633.40')

2. NO CORNER REFERENCES FOUND IN COUNTY SURVEYOR RECORDS.

3. CORNER REFERENCED IN SURVEY OF LANSING TOWNSHIP IN 1909 BY R.J. ROBB, IN BOOK 5, PAGE 218, AS "CEMENT POST", 2.5 FT. LONG, 3" SQUARE AT TOP AND 4" SQUARE AT BOTTOM, WITNESSED BY: "ELM 12", N-W 70' MAPLE, S-W, 88'. NO DISTANCES SHOWN ON SURVEY.

4. CORNER REFERENCED IN PLAT OF "CULVER'S SUBDIVISION", DATED DEC. 20, 1920, BY A.N. BATEMAN, REGISTERED SURVEYOR, AND RECORDED IN LIBER 7 OF PLATS, PAGE 7, INGHAM COUNTY RECORDS. NO REFERENCE TO MONUMENT OR WITNESSES GIVEN. PLAT SHOWS CORNER AS BEING ON LOT #18, AND NOTED AS "SEC. COR."

CONTINUED ON BACK

B. Description of corner evidence found and/or method applied in restoring or reestablishing corner: SEARCHED AT APPARENT LOCATION OF CORNER AND FOUND 5/8" REFERENCE PIPE AS INDICATED IN ITEM #7. NO EXCAVATION PERFORMED AT THIS LOCATION. ACCEPTED LOCATION OF FOUND 5/8" PIPE AS REFERENCE MONUMENT. SET STANDARD INGHAM COUNTY REMON. BAR WITH 2-1/2" ALUMINUM REMON. CAP IN ITS LOCATION. SKETCH ATTACHED (SEE ITEM 6-A) SHOWS SURVEYOR FOUTY'S RELATIVE BEARINGS AND DISTANCES FROM NORTH LINE OF SADIE COURT TO THE CORNER POSITION. THE NORTH LINE BEARING S88°10'34" E, 332.86' AND THE REFERENCE LINE BEARING N01°25'26" E, 79.43' TO THE ACTUAL CORNER POSITION.

C. Description of monument for corner and accessories established to perpetuate locating the position of the corner: E-3, T4N, R2W, LANSING TOWNSHIP, INGHAM COUNTY. REFERENCE MONUMENT. SET STANDARD INGHAM COUNTY REMON. BAR AND ALUMINUM REMON. CAP. STAMPED 30090. WITNESSED BY:

ED. N&T #18989, W/S 10" PINE, N 21° E, 19.82'

NORTHWEST CORNER GARAGE END., N 44° E, 53.70'

SOUTHWEST CORNER GARAGE END., N 63° E, 39.19'

C/L 2" FENCE ANCHOR POST, S 85° E, 33.57'

NORTHWEST CORNER GAR. HSE. #723, S 08° W, 79.50'

SET N&T #30090, S/S 14" PINE, N 79° W, 15.20'

SET N&T #30090, W/S 12" PINE, N 24° W, 34.81'

BEARINGS GIVEN ARE MAGNETIC.



Signed by David R. Lohr

Date OCTOBER 24, 2000

Surveyor's Michigan License No. 30090

P.A. 345 INGHAM COUNTY
PEER APPROVED 6/20/2000 *ML*

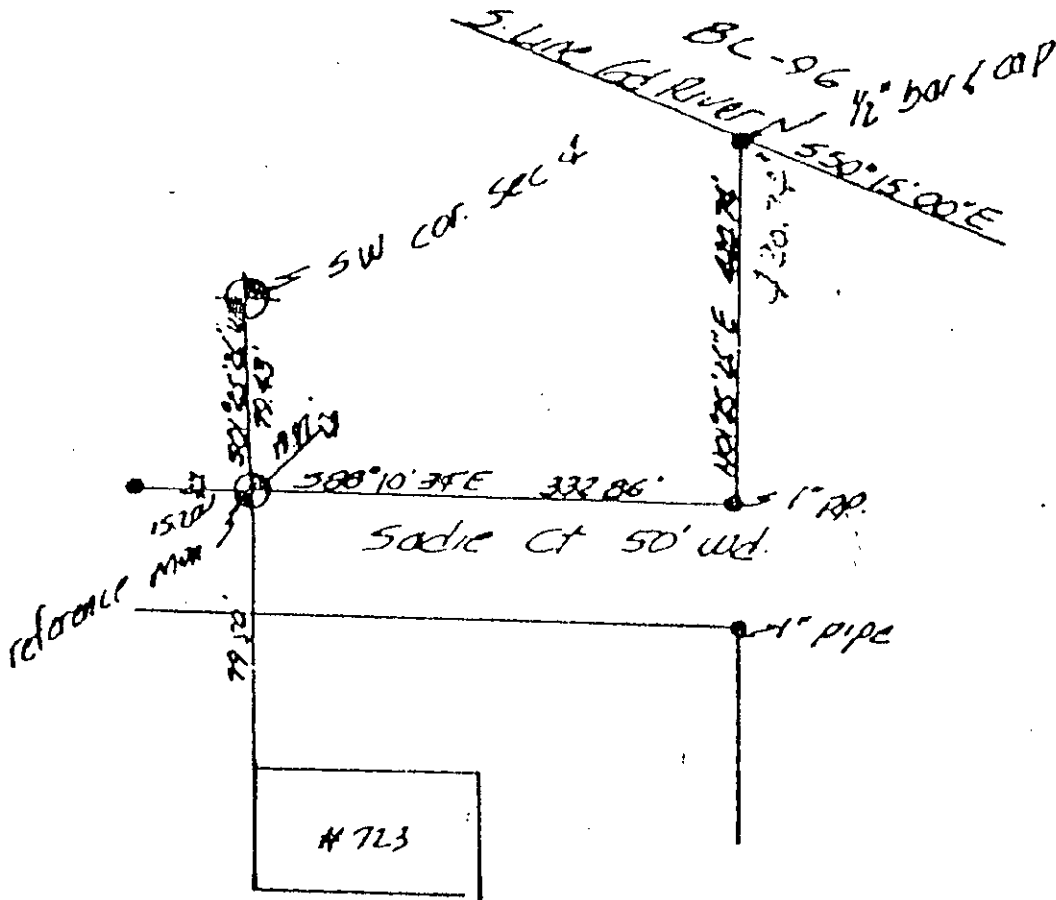
JAN 18 2001

SECTION

E-3: LANSING TOWNSHIP, PART A CONTINUED:

5. CORNER REFERENCED IN SURVEY BY C.M. CADE, CITY OF LANSING ENGINEER, NOT DATED (CIRCA 1921) "THE POST WAS POINTED OUT TO C.M. CADE IN 1921 BY A.N. BATEMAN WHO HAD USED SAME ON SURVEY OF CULVER'S ADDITION. ONLY STUMPS OF TREES REMAIN. SET A STANDARD MONUMENT, 8" BELOW SURFACE TO COVER." WITNESSED BY: S.W. BLOCK WALL, N 64.30 E, 68.35'
6. CORNER REFERENCED IN LCRC, DATED 11/12/83, BY MARVIN F. FOUTY, RLS#18989, AND RECORDED IN LIBER 3, PAGE 79. "A CEMENT POST 2.5' LONG, 3'SQUARE AT THE TOP AND 4" SQUARE AT THE BOTTOM WAS SET IN 1909 BY COUNTY SURVEYOR ROBB, FROM INGHAM COUNTY RECORDS. THE CORNER WAS CALLED FOR ON CULVER'S SUBDIVISION OF LOT 16 AND PART OF LOT 17, TOWNSEND'S SUBDIVISION ON SECTIONS 4,5,8 AND 9, T4N, R2W, CITY OF LANSING AND LANSING TOWNSHIP, INGHAM COUNTY, MICH. AS RECORDED IN LIBER 7 OF PLATS, PAGE 7. THE CORNER WAS WITNESSED BY DIMENSIONS TO THE CORNERS OF LOT 18 OF SAID PLAT. THE CORNER POSITION WAS IS NOW OCCUPIED BY A GARAGE CONSTRUCTED IN 1969. A REFERENCE MONUMENT WAS SET AND WITNESSED AS NOTED BELOW. 1/2" BAR WITH IDENT. CAP SET AS REFERENCE MONUMENT. WITNESSES TO REFERENCE MONUMENT WHICH IS S01 25' 26" W 79.43' FROM INACCESSABLE SECTION CORNER. (BEARING RELATIVE AND REFERENCED TO HIGHWAY BL-96 WHICH IS RECORDED TO BEAR N 50° 15' 00" W)." WITNESSED BY:

NAIL & TAG, SOUTH SIDE 8" PINE, W, 15.20'	(FOUND)
NAIL & TAG, WEST SIDE 8" PINE, NE, 19.97'	(FOUND)
NW CORNER HOUSE #723, SOUTH, 79.50'	(FOUND)



7. CORNER REFERENCED IN SURVEY, DATED 06/30/97, BY MARK W. WITALEC, ILS#30897, AND RECORDED IN LIBER 7, PG.1194. "CORNER FALLS IN GARAGE -- FOUND THE CORNER REFERENCE POINT RECORDED IN LIBER 3, PP. 79-80 OF INGHAM COV. LAND RECORDS (NOW OCCUPIED BY A 5/8" PIPE). WITNESSED BY:
 - S. 1.4' TO A 5' HIGH CHAIN LINK FENCE
 - W. 15.20' TO A N.&T. #18989 IN THE S. SIDE OF A 14" PINE TREE (N. & T. IS 6" HIGH)
 - NE. 19.81' TO A N.&T. #18989 IN THE W. SIDE OF AN 8" PINE TREE
 - S. 79.54' TO THE NW BRICK CORNER OF HOUSE #723 SADIE CT.
 SURVEY SHOWS DISTANCE WEST TO D-3 OF 2594.08 FT.
8. NO OTHER REFERENCES FOUND.



2000-047323

Page: 2 of 2

11/07/2000 08:33A