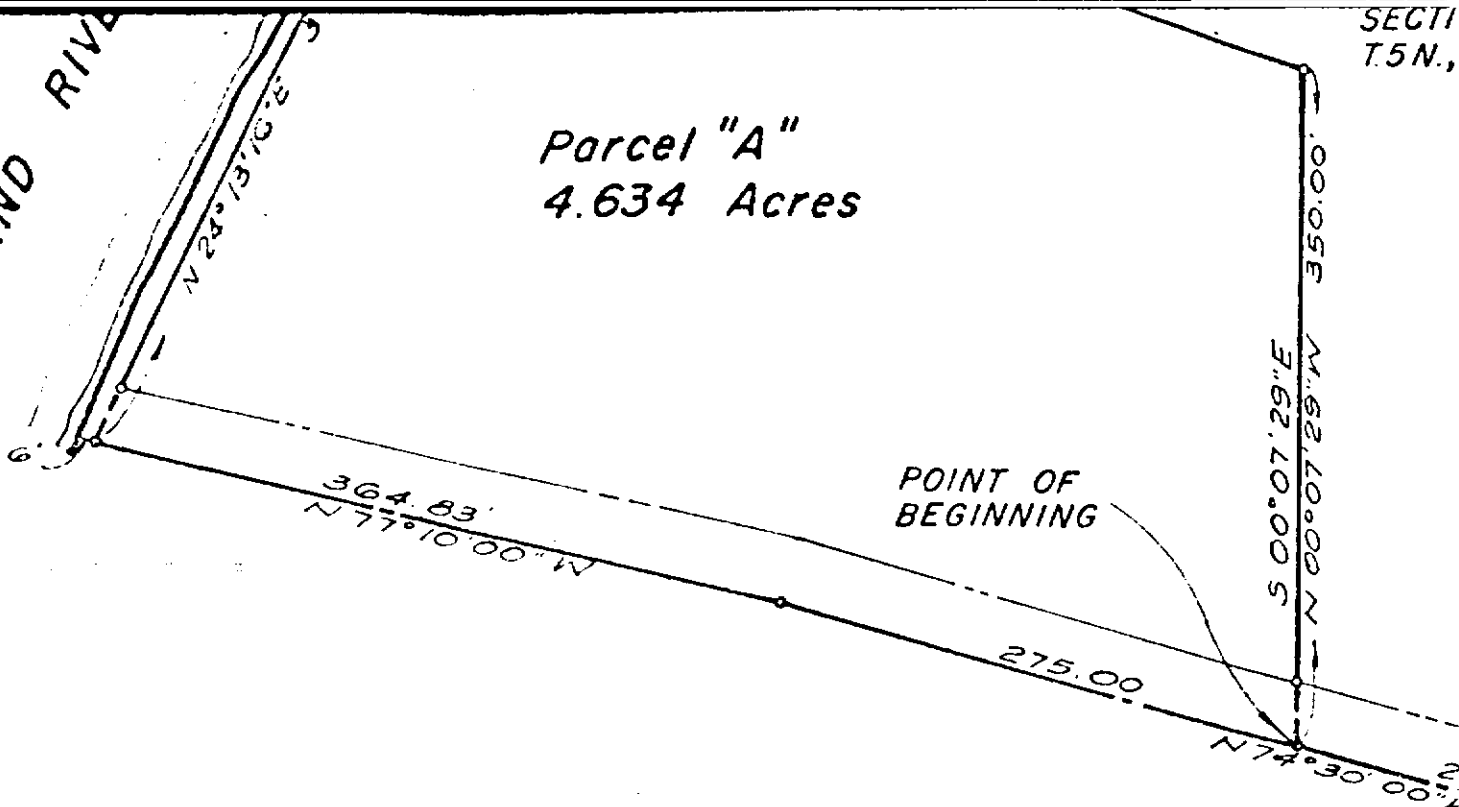


GRAND RIVER

Parcel "A"  
4.634 Acres

SECTION  
T.5N.,



1/4 corner common to Sections 8 & 9,  
T.5N., R.5W

- 1" Pipe
- 11" Oak - Due North - 27.72 ft.
- 12" Oak - N78°E - 21.61 ft.
- 4" Cedar - Due South - 41.66 ft.

Section Corner Co  
to Sections 8, 9, 16,  
T.5N., R.5W.,

Section corner common to Section  
8, 9, 16, & 17, T.5N., R.5W

- 1/2" Rebar (Consumers Power  
Company Cap)
- 15" W. Cherry - S55°W - 9.42 ft.
- 14" Cedar - East - 7.55 ft.
- 20" Walnut - N7°W - 40.95 ft.
- 10" W. Cherry - S80°W - 29.41 ft.