

STATE OF MICHIGAN
DEPARTMENT
OF
NATURAL RESOURCES

W

LAND CORNER RECORD

H-1 Ionia COUNTY

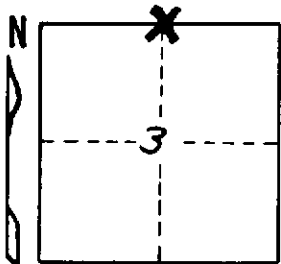
T 8N R 7W

DESCRIPTION OF CORNER N 1/4 Cor. Sec. 3

CORNER MONUMENT Found 1 1/4" Iron Pipe 6" Below Gravel

DATE MONUMENT ~~PLACED~~ AND WITNESSED 1-9-70

WITNESSES TO CORNER..... S. 12° E. 53.09 30" OAK



S. 31° W. 31.56 14" Ash

N. 11° E. 24.92 22" OAK

AND

CIRCLE CORNER REGISTERED

DESCRIPTION IN DETAIL AS TO HOW CORNER WAS LOCATED AND IDENTIFIED OR RESTORED.

Corner was located from witnesses obtained from Ionia County Road Surveyor

SURVEYOR'S SEAL

SIGNED *[Signature]* DATE Jan 1970
REGISTERED LAND SURVEYOR

DISTRIBUTION:

County Courthouse
Area Forester (Regions I & II)
District or Region Surveyor
Forestry Div., Lansing

#12029