

STATE OF MICHIGAN  
DEPARTMENT  
OF  
NATURAL RESOURCES

LAND CORNER RECORD

Ionia COUNTY

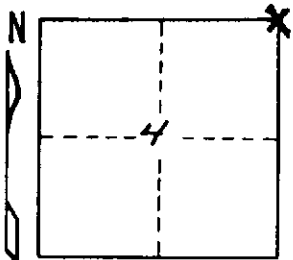
T 8N. R 7W

DESCRIPTION OF CORNER N.E. Corner Section 4

CORNER MONUMENT Found Boat Spike

DATE MONUMENT PLACED AND WITNESSED 1-9-70

WITNESSES TO CORNER..... N. 26° W. 24.52 20" OAK



N. 35° E. 45.68 5" White Pine

S. 23° W. 66.13 20" White Pine

AND

CIRCLE CORNER REGISTERED

DESCRIPTION IN DETAIL AS TO HOW CORNER WAS LOCATED AND IDENTIFIED OR RESTORED.

*Corner was located from witnesses obtained from  
Ionia Co. Road Surveyors*

SURVEYOR'S SEAL

SIGNED

*[Signature]*  
REGISTERED LAND SURVEYOR

DATE

Jan 1970

DISTRIBUTION:

# 12029

County Courthouse  
Area Forester (Regions I & II)  
District or Region Surveyor  
Forestry Div., Lansing

R 4047  
Rev. 10/68