

STATE OF MICHIGAN
DEPARTMENT
OF
NATURAL RESOURCES

5

LAND CORNER RECORD

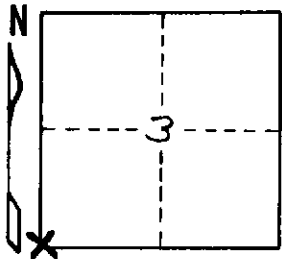
G-3 Jonis COUNTY
T 8N R 1W

DESCRIPTION OF CORNER S.W. Corner Section 3

CORNER MONUMENT Railroad Spike 2' Below Ground

DATE MONUMENT PLACED AND WITNESSED 1-9-70

WITNESSES TO CORNER..... S. 46° W. 68.17 Telephone Pole



S. 10° W. 183.35 20' Monument

S. 52° E. 51.7 Sign Post

AND

CIRCLE CORNER REGISTERED

DESCRIPTION IN DETAIL AS TO HOW CORNER WAS LOCATED AND IDENTIFIED OR RESTORED.

*Set corner according to witnesses obtained
from Jonis Co. Road Surveyor*

SURVEYOR'S SEAL

SIGNED *Wayne J. [Signature]* DATE Jan 1970
REGISTERED LAND SURVEYOR

DISTRIBUTION:

County Courthouse
Area Forester (Regions I & II)
District or Region Surveyor
Forestry Div., Lansing

Reg # 12029