

# LAND CORNER RECORDATION CERTIFICATE

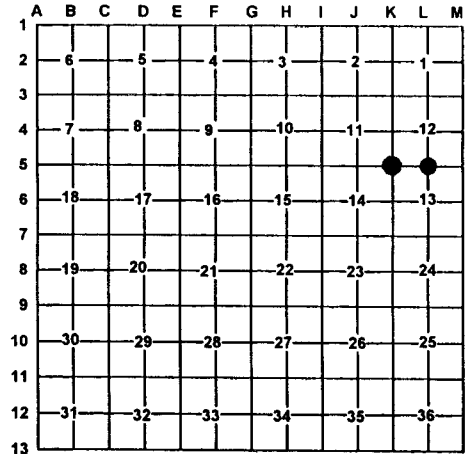
Filing Requirement of Act 74, Mich. PA 1970

For Corners In: Iosco (County)	Located In	Corner Code #	
1. Public Land Survey	T <u>21N</u> R <u>6E</u>	<u>K-5</u>	
	T <u>21N</u> R <u>6E</u>	<u>L-5</u>	
2. Property Controlling in Section	S _____ T _____ R _____	_____	
	S _____ T _____ R _____	_____	
3. Miscellaneous Property in Section	S _____ T _____ R _____	_____	
	S _____ T _____ R _____	_____	
4. Lot No: _____	Recorded Plat: _____		
5. Private Claims: _____			

**Register of Deeds Stamp & File Number**

I, Carl T. Kiiskila, in a field survey on November 14, 2000 do hereby state that under requirements of PA 74, Michigan PA of 1970, the corner points mentioned in lines 1 and 2 above were in conformance with regulations and rules therefore as required in the current manual of survey instructions of the United States Department of the Interior, Bureau of Land Management or by a decree of a Court of Law and/or that the corner points mentioned in lines 3, 4 and 5 above were in conformance with the rules of the Michigan Board of Land Surveyors or by a Decree of a Court of Law; established, re-established, monumented, recovered, found as expressed below:

**NOTE: Not more than 2 corners, all in the same town and range, may be recorded on this certificate.**



**A. Description of original monument and accessories and/or subsequent restoration:**

**K-5 G.L.O. John Mullett D.S. 1843**  
 Set post corner sections 11,12,13, and 14  
 Wit: Cedar 14 N69°E 15 Links  
 Cedar 10 S63°W 26 Links

**L-5 G.L.O. John Mullett D.S. 1843**  
 Set quarter section post  
 Wit: Elm 8 N31°E 5 Links  
 Black Ash 16 S53°W 10 Links

**B. Description of corner evidence found and/or method applies in restoring or re-establishing corner:**

**K-5** Re-established the Southwest corner of section 12 by double proportionate measurement between corners one mile to the North, South, East and West.

**L-5** Re-established the South quarter corner of section 12 midway and online between corners K-5 and M-5.

**C. Description of monument for corner and accessories established to perpetuate locating the position of the corner:**

**K-5 Set D.N.R. monument**  
 Wit: 12" Maple N66°E 21.79'  
 7" Ash S06°E 22.06'  
 6" Ash N52°W 26.91'  
 6" Maple N06°E 17.18'  
 Carsonite Post North 1'±

**L-5 Set D.N.R. monument**  
 Wit: 10" Maple S84°E 15.92'  
 10" Ash S46°E 10.88'  
 5" Basswood S56°W 16.22'  
 5" Ash N09°W 25.59'  
 Carsonite Post North 1'±

Signed by: \_\_\_\_\_

*Carl T. Kiiskila*

Date: \_\_\_\_\_

2-06-01

Surveyor's Michigan License No.: \_\_\_\_\_

33981

