

**LAND CORNER RECORDATION CERTIFICATE**  
Filing Requirement of Act 74, Mich. PA 1970

For Corners In:				
Losco		Located In		Corner Code #
(County)				
1. Public Land Survey		T T21N R 6E		J-5
		T _____ R _____		_____
2. Property Controlling in Section	S 11	T 21N R 6E		12
	S _____	T _____ R _____		_____
3. Miscellaneous Property in Section	S _____	T _____ R _____		_____
	S _____	T _____ R _____		_____

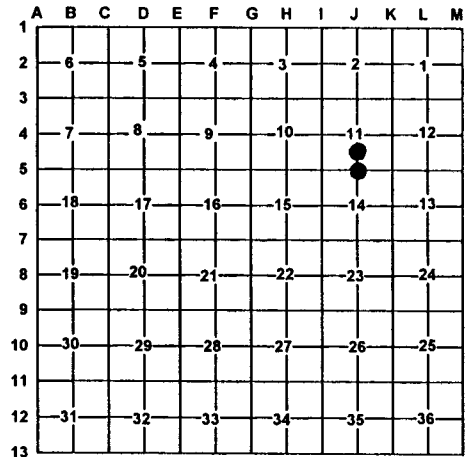
Register of Deeds Stamp & File Number

4. Lot No: \_\_\_\_\_ Recorded Plat: \_\_\_\_\_

5. Private Claims: \_\_\_\_\_

I, Carl T. Kiiskila, in a field survey on October 31, 2000 do hereby state that under requirements of PA 74, Michigan PA of 1970, the corner points mentioned in lines 1 and 2 above were in conformance with regulations and rules therefore as required in the current manual of survey instructions of the United States Department of the Interior, Bureau of Land Management or by a decree of a Court of Law and/or that the corner points mentioned in lines 3, 4 and 5 above were in conformance with the rules of the Michigan Board of Land Surveyors or by a Decree of a Court of Law; established, re-established, monumented, recovered, found as expressed below:

**NOTE: Not more than 2 corners, all in the same town and range, may be recorded on this certificate.**



A. Description of original monument and accessories and/or subsequent restoration:

J-5 G.L.O. John Mullett D.S. 1843  
Set quarter section post  
Wit: White Pine 14 N60°E 15 Links  
Maple 6 S73°W 23 Links

12- This corner position was not established during the original government survey.

B. Description of corner evidence found and/or method applies in restoring or re-establishing corner:

J-5 Re-established the North quarter corner of section 14 midway and online between I-5 and K-5.

12- Established the Southeast corner of the Northeast quarter of the Southwest quarter of section 11 per B.L.M. instruction for the subdivision of a section.

C. Description of monument for corner and accessories established to perpetuate locating the position of the corner:

J-5 Set D.N.R. monument  
Wit: 6" Maple N50°W 54.20'  
6" Maple N23°W 45.45'  
5" Ash N28°E 38.96'  
6" Maple N55°E 61.46'

12- Set 5/8" X 32" rered with P.S. cap #33981  
Wit: 5" Ash S42°W 15.65'  
5" Ash N15°W 4.77'  
7" White Pine N62°E 38.07'  
4" Ash S40°E 17.56'  
Carsonite Post North 1'±

Signed by: Carl T. Kiiskila  
Surveyor's Michigan License No.: 33981

Date: 2-6-01

