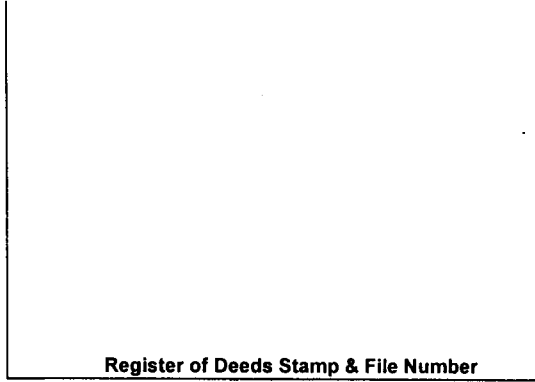


LAND CORNER RECORDATION CERTIFICATE

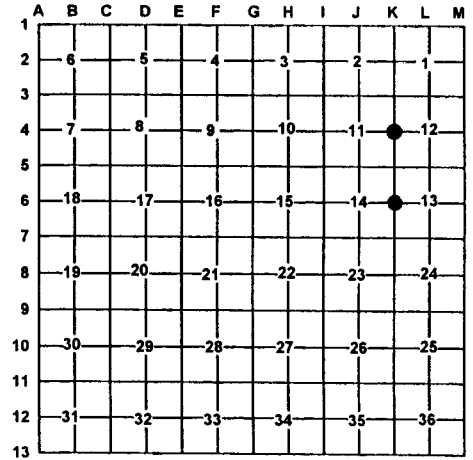
Filing Requirement of Act 74, Mich. PA 1970

For Corners In:			
losco	Located In	Corner Code #	
(County)			
1. Public Land Survey	T <u>21N</u> R <u>6E</u>	<u>K-4</u>	
	T <u>21N</u> R <u>6E</u>	<u>K-6</u>	
2. Property Controlling in Section	S _____ T _____ R _____	_____	
	S _____ T _____ R _____	_____	
3. Miscellaneous Property in Section	S _____ T _____ R _____	_____	
	S _____ T _____ R _____	_____	
4. Lot No: _____	Recorded Plat: _____		
5. Private Claims: _____			



I, Carl T. Kiiskila, in a field survey on November 14, 2000 do hereby state that under requirements of PA 74, Michigan PA of 1970, the corner points mentioned in lines 1 and 2 above were in conformance with regulations and rules therefore as required in the current manual of survey instructions of the United States Department of the Interior, Bureau of Land Management or by a decree of a Court of Law and/or that the corner points mentioned in lines 3, 4 and 5 above were in conformance with the rules of the Michigan Board of Land Surveyors or by a Decree of a Court of Law; established, re-established, monumented, recovered, found as expressed below:

NOTE: Not more than 2 corners, all in the same town and range, may be recorded on this certificate.



A. Description of original monument and accessories and/or subsequent restoration:

K-4 G.L.O. John Mullett D.S. 1843 Set quarter section post Wit: White Pine 30 N05°E 18 Links White Pine 20 S06°W 24 Links	K-6 G.L.O. John Mullett D.S. 1843 Set quarter section post Wit: White Pine 30 N05°E 18 links White Pine 20 S06°W 24 links
--	--

B. Description of corner evidence found and/or method applies in restoring or re-establishing corner:

K-4 Re-established the east quarter corner of section 11 midway and online between K-3 and K-5.	K-6 Re-established the East quarter corner of section 14 midway and online between K-5 and K-7.
---	---

C. Description of monument for corner and accessories established to perpetuate locating the position of the corner:

K-4 Set D.N.R. Monument Wit: 6" Maple N35°E 18.52' 4" Maple S25°E 22.71' 6" White Pine S29°W 28.98' 3" Maple N78°W 23.19' Carsonite Post South 1±	K-6 Set D.N.R. Monument Wit: 14" White Pine N45°E 36.46' 8"&6" Twin Maple N83°E 26.56' 7" Twin Maple S53°E 17.56' 14" White Pine N70°W 22.21' South edge of marsh North 37± Carsonite Post North 1±
--	---

Signed by: Carl T. Kiiskila
 Surveyor's Michigan License No.: 33981

Date: 2-06-01

