

LAND CORNER RECORDATION CERTIFICATE

Filing Requirement of Act 74, Mich. PA 1970

For Corners In: _____
 Iosco _____
 (County)

		Located In		Corner Code #
1. Public Land Survey	T	21N	R 6E	G-4
	T	_____	R _____	_____
2. Property Controlling in Section	S 14	T 21N	R 6E	1
	S _____	T _____	R _____	_____
3. Miscellaneous Property in Section	S _____	T _____	R _____	_____
	S _____	T _____	R _____	_____

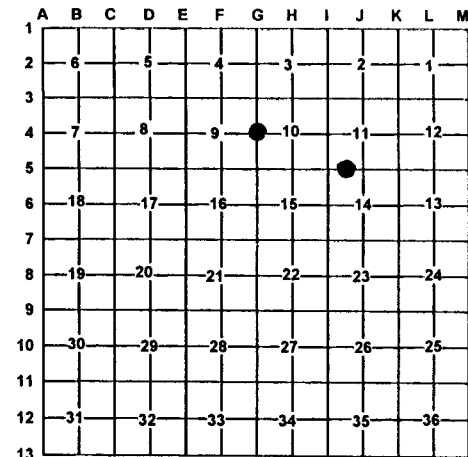
4. Lot No: _____ Recorded Plat: _____

5. Private Claims: _____

I, Carl T. Kiiskila, in a field survey on July 18, 2000 do hereby state that under requirements of PA 74, Michigan PA of 1970, the corner points mentioned in lines 1 and 2 above were in conformance with regulations and rules therefore as required in the current manual of survey instructions of the United States Department of the Interior, Bureau of Land Management or by a decree of a Court of Law and/or that the corner points mentioned in lines 3, 4 and 5 above were in conformance with the rules of the Michigan Board of Land Surveyors or by a Decree of a Court of Law; established, re-established, monumented, recovered, found as expressed below:

NOTE: Not more than 2 corners, all in the same town and range, may be recorded on this certificate.

Register of Deeds Stamp & File Number



A. Description of original monument and accessories and/or subsequent restoration:

G-4 G.L.O. John Mullett D.S. 1843
 Set quarter section post
 Wit: White Pine 18" S17°W 13 links
 White Pine 18" N6°W 18 links

1- This corner position was not established during the original government survey.

B. Description of corner evidence found and/or method applies in restoring or re-establishing corner:

G-4 Re-established the East quarter corner of section 11 midway and on line between K-3 and K-5

1- Established the Northwest corner of the Northeast quarter of the Northwest quarter of section 14 per B.L.M. instructions for the subdivision of a section.

C. Description of monument for corner and accessories established to perpetuate locating the position of the corner:

G-4 Set standard D.N.R. monument
 Wit: 6" White Pine S32°W 6.58'
 5" Elm N28°W 18.93'
 6" Cherry S44°E 20.68'
 8"&4" Twin Ash N50°E 22.10'
 Carsonite Post North 1'±

1- Set 5/8" X 32" rerod with P.S. cap #33981
 Wit: 6" Twin Maple N75°E 11.64'
 6" Ash N11°E 10.09'
 6" Maple S60°W 24.57'
 10" Maple S10°E 25.85'
 Carsonite Post North 1'±

Signed by: Carl T. Kiiskila
 Surveyor's Michigan License No.: 33981

Date: 2-06-01

