

LAND CORNER RECORDATION CERTIFICATE

Filing Requirement of Act 74, Mich. PA 1970

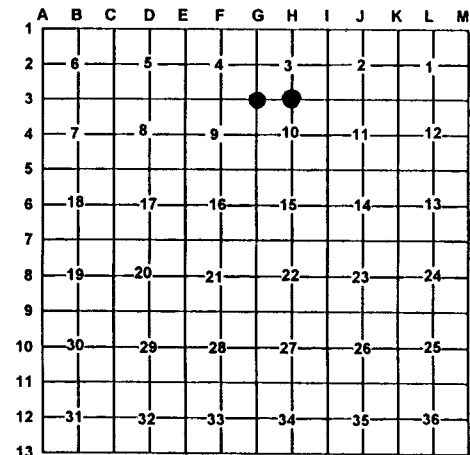
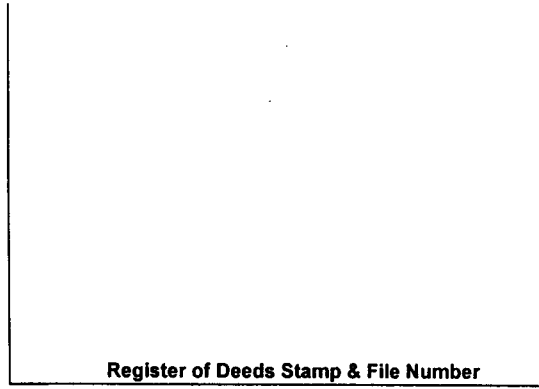
For Corners In: Iosco (County)	Located In	Corner Code #
1. Public Land Survey	T <u>21N</u> R <u>6E</u>	<u>G-3</u>
	T <u>21N</u> R <u>6E</u>	<u>H-3</u>
2. Property Controlling in Section	S _____ T _____ R _____	_____
	S _____ T _____ R _____	_____
3. Miscellaneous Property in Section	S _____ T _____ R _____	_____
	S _____ T _____ R _____	_____

4. Lot No: _____ Recorded Plat: _____

5. Private Claims: _____

I, Carl T. Kiiskila, in a field survey on November 6, 2000 do hereby state that under requirements of PA 74, Michigan PA of 1970, the corner points mentioned in lines 1 and 2 above were in conformance with regulations and rules therefore as required in the current manual of survey instructions of the United States Department of the Interior, Bureau of Land Management or by a decree of a Court of Law and/or that the corner points mentioned in lines 3, 4 and 5 above were in conformance with the rules of the Michigan Board of Land Surveyors or by a Decree of a Court of Law; established, re-established, monumented, recovered, found as expressed below:

NOTE: Not more than 2 corners, all in the same town and range, may be recorded on this certificate.



A. Description of original monument and accessories and/or subsequent restoration:

G-3 G.L.O. John Mullett D.S. 1843
Set post corner of section 3,4,9 and 10
Wit: Aspen 14 N63°E 11 links
Fir 9 S56°W 20 links

H-3 G.L.O. John Mullett D.S. 1843
Set quarter section post
Wit: Black Ash 8 N59°E 11 links
Maple 8 S39°W 22 links

Consumers Power Co. fee land in section 3 T.21N.,R.6E.
1962, map shows found RR spike in blacktop for corner.
Wit: Power Pole N.W. 84.32'
Power Pole N.E. 124.62'

Consumers Power Co. fee land in section 3 T.21N.,R.6E.
1962, map shows found RR spike in blacktop for corner.
Wit: South leg of Tower N40°W 44.46'
Power Pole N18°W 83.08'

B. Description of corner evidence found and/or method applies in restoring or re-establishing corner:

G-3 Found railroad spike fitting Consumers Power Co. distance easterly well.

H-3 Found a railroad spike fitting Consumers Power Co. distances East and West well.

C. Description of monument for corner and accessories established to perpetuate locating the position of the corner:

G-3 Set 5/8" X 32" rerod with P.S. cap #33981
Wit: Southeast leg of utility tower N77°W 123.98'
8" Ash South 48.38'
7" White Pine S70°W 79.41'
*18" White Pine North 90.09'
Centerline of E-W black top road South 3'±

H-3 Set 5/8" X 32" rerod with P.S. cap #33981
Wit: Southeast leg of utility tower N36°W 44.96'
6" Ash N19°E 102.85'
Underground cable marker post S05°E 57.42'
1 1/4" iron pipe North 32.93'

* Old witnesses by others

Signed by: Carl T. Kiiskila
Surveyor's Michigan License No.: 33981

Date: 2-06-01

