

SURVEY & REMONUMENTATION

DEC 13 1993

COMMISSION

**IOSCO COUNTY REMONUMENTATION CORNER
LAND CORNER RECORDATION CERTIFICATE**

Filing Requirement of Act 74, Mich. P.A. 1970

For corners in

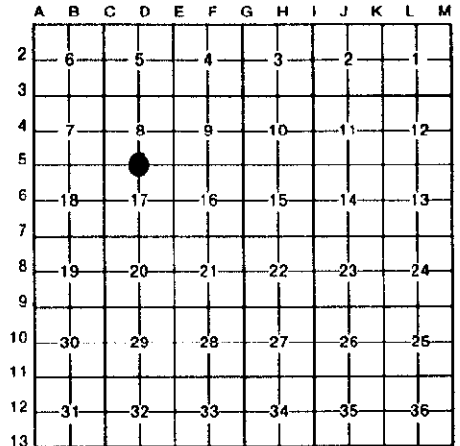
| IOSCO (County) | Located In: | Corner Code ## |
|---------------------------------------|-------------------|----------------|
| 1. Public Land Survey | T 22N R 6E | D-5 |
| | T ___ R ___ | _____ |
| | T ___ R ___ | _____ |
| | T ___ R ___ | _____ |
| 2. Property Controlling in Section | S ___ T ___ R ___ | _____ |
| | S ___ T ___ R ___ | _____ |
| 3. Miscellaneous Property in Sec. | S ___ T ___ R ___ | _____ |
| | S ___ T ___ R ___ | _____ |

REGISTER OF DEEDS
 IOSCO COUNTY, MICH.
Constance M. Deagle

93-16
 FILED
 NOV 24 4 32 PM '93

Register of Deeds Stamp & File Number

4. Lot No. _____, Recorded Plat _____
 5. Private Claims _____



I, RICHARD L. MILLER in a field survey on OCTOBER 7, 19 93, do hereby certify that under requirements of P.A. 74, Michigan P.A. of 1970, the corner points mentioned in lines 1 and 2 above were in conformance with regulations and rules therefore as required in the current manual of survey instructions of the United States Department of the Interior, Bureau of Land Management or by a decree of a Court of Law and/or that the corner points mentioned in lines 3, 4 and 5 above were in conformance with the rules of the Michigan Board of Land Surveyors or by a Decree of a Court of Law; established, re-established, monumented, re-monumented, recovered, found as expressed below:

NOTE: Not more than 4 corners, all in the same town and range, may be recorded on this certificate.

A. Description of original monument and accessories and/or subsequent restoration:

1843 ORIGINAL SUBDIVISION MULLETT & BURT
 SET WOOD POST
 9" BEECH S.41 W. 16 LKS
 10" MAPLE N.45 E. 28 LKS

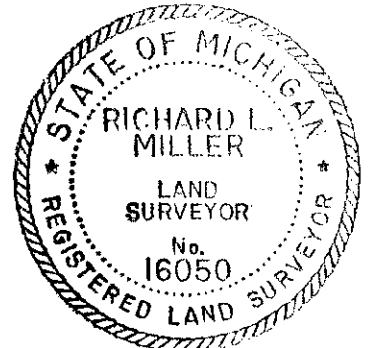
1931 DEPENDANT RESURVEY GUY VEAL, APPROVED 1933
 SET 3 1/2" BRASS TABLET IN 6" DIAMETER CONCRETE CYLINDER, 24" LONG
 5" POPLAR S. 4 1/4 W. 85 LKS
 5" POPLAR N.69 1/2 W. 46 LKS
 FENCE CORNER S.80 1/2 W. 73 LKS

B. Description of corner evidence found and/or method applied in restoring or reestablishing corner:

FOUND 1931 MONUMENT IN ORIGINAL POSITION 6" ABOVE GROUND
 FOUND REMNANTS OF FENCES

C. Description of monument for corner and accessories established to perpetuate locating the position of the corner:

3 1/2" DIAMETER BRASS CAP IN 6" CONCRETE CYLINDER, 24" LONG
 SET WITNESS TAG IN N.E. SIDE OF 12" MAPLE N.40 W. 91.45'
 SET WITNESS TAG IN N.W. SIDE OF 16" ASH N.55 E. 58.25'
 SET WITNESS TAG IN N.E. SIDE OF 36" TWIN MAPLE S.40 E. 67.85'
 SET WITNESS TAG IN N.W. SIDE OF 14" MAPLE S.50 W. 82.70'



Signed by *Richard L. Miller* Date NOVEMBER 17, 1993
 Surveyor's Michigan License No. 16050