

SURVEY & REMONUMENTATION

DEC 13 1993

**IOSCO COUNTY REMONUMENTATION CORNER
LAND CORNER RECORDATION CERTIFICATE**
Filing Requirement of Act 74, Mich. P.A. 1970

For corners in **COMMISSION**

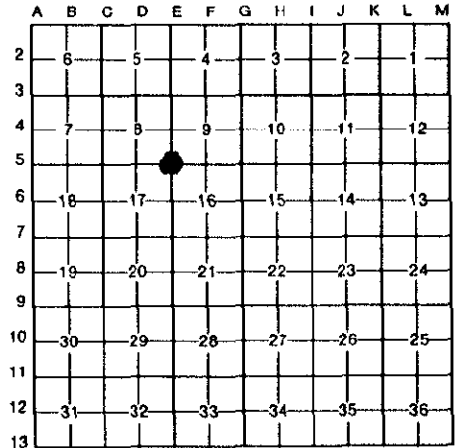
FILED
93-14
NOV 24 4 32 PM '93
REGISTRAR OF DEEDS
IOSCO COUNTY, MICH.
Deborah M. Doyle

IOSCO (County)	Located In:	Corner Code #
1. Public Land Survey	T <u>22N</u> R <u>6E</u>	<u>E-5</u>
	T _____ R _____	_____
	T _____ R _____	_____
	T _____ R _____	_____
2. Property Controlling in Section	S _____ T _____ R _____	_____
	S _____ T _____ R _____	_____
3. Miscellaneous Property in Sec.	S _____ T _____ R _____	_____
	S _____ T _____ R _____	_____

Register of Deeds Stamp & File Number

4. Lot No. _____, Recorded Plat _____
5. Private Claims _____

I, RICHARD L. MILLER in a field survey on OCTOBER 7, 19 93, do hereby certify that under requirements of P.A. 74, Michigan P.A. of 1970, the corner points mentioned in lines 1 and 2 above were in conformance with regulations and rules therefore as required in the current manual of survey instructions of the United States Department of the Interior, Bureau of Land Management or by a decree of a Court of Law and/or that the corner points mentioned in lines 3, 4 and 5 above were in conformance with the rules of the Michigan Board of Land Surveyors or by a Decree of a Court of Law; established, re-established, monumented, re-monumented, recovered, found as expressed below:



NOTE: Not more than 4 corners, all in the same town and range, may be recorded on this certificate.

A. Description of original monument and accessories and/or subsequent restoration:

1843 ORIGINAL SUBDIVISION MULLETT & BURT
SET WOOD POST
9" BEECH S.25 E. 43 LKS
12" MAPLE N.53 W. 12 LKS

1931 DEPENDANT RESURVEY GUY VEAL, APPROVED 1933
SET 3 1/2" BRASS TABLET IN 6" DIAMETER CONCRETE CYLINDER, 24" LONG
#1-12" W. PINE N.73 1/2 E. 267 LKS #4-8" POPLAR N.26 1/2 W. 170 LKS
#2-11" POPLAR S.72 3/4 E. 35 LKS
#3-14" POPLAR S.49 1/2 W. 246 LKS

B. Description of corner evidence found and/or method applied in restoring or reestablishing corner:

FOUND 1931 MONUMENT IN ORIGINAL POSITION 3" ABOVE GROUND
FOUND #1 1931 WITNESS

C. Description of monument for corner and accessories established to perpetuate locating the position of the corner:

3 1/2" DIAMETER BRASS CAP IN 6" CONCRETE CYLINDER, 24" LONG
SET WITNESS TAG IN S.E. SIDE OF 32" W. PINE N.73 1/2 E. 177.35' (1931)
SET WITNESS TAG IN N.E. SIDE OF 18" W. PINE N.80 W. 4.97'
SET WITNESS TAG IN N.W. SIDE OF 7" SPRUCE S.46 W. 69.87'
SET WITNESS TAG IN N.E. SIDE OF 12" W. PINE S.47 E. 42.44'



Signed by *Richard L. Miller*
Surveyor's Michigan License No. 16050

Date NOVEMBER 17, 1993