

# LAND CORNER RECORDATION CERTIFICATE

Filing Requirement of Act 74, Mich. PA 1970

For Corners In:

Iosco  
(County)

Located In

Corner Code #

1. Public Land Survey	T	<u>24N</u>	R	<u>8E</u>	<u>I-6</u>
	T	<u>24N</u>	R	<u>8E</u>	<u>I-7</u>
2. Property Controlling in Section	S	_____	T	_____	R
	S	_____	T	_____	R
3. Miscellaneous Property in Section	S	_____	T	_____	R
	S	_____	T	_____	R

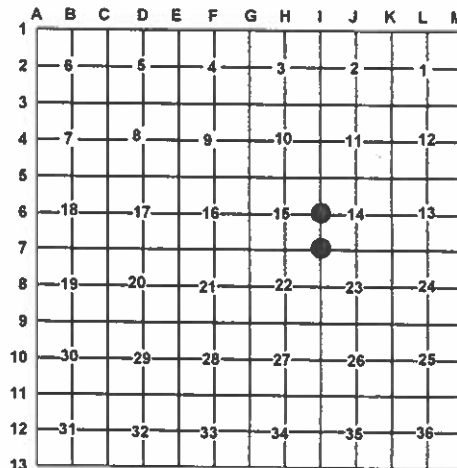
4. Lot No: \_\_\_\_\_ Recorded Plat: \_\_\_\_\_

5. Private Claims: \_\_\_\_\_

I, Carl T. Kiiskila, in a field survey on November 13 2006 do hereby state that under requirements of PA 74, Michigan PA of 1970, the corner points mentioned in lines 1 and 2 above were in conformance with regulations and rules therefore as required in the current manual of survey instructions of the United States Department of the Interior, Bureau of Land Management or by a decree of a Court of Law and/or that the corner points mentioned in lines 3, 4 and 5 above were in conformance with the rules of the Michigan Board of Land Surveyors or by a Decree of a Court of Law; established, re-established, monumented, recovered, found as expressed below:

**NOTE: Not more than 2 corners, all in the same town and range, may be recorded on this certificate.**

Register of Deeds Stamp & File Number



A. Description of original monument and accessories and/or subsequent restoration:

I-6 G.L.O.~ 1843 J. Mullett and Wm Burt set quarter section post Wit: Y. Pine 20" S26°E 89 links  
Y. Pine 12" S65°E 19 links

I-7 G.L.O.~ 1843 J. Mullett and Wm Burt Set post for corners 14,15,22 and 23  
Wit: Spruce Pine 3 N58°W 23 links  
Spruce Pine 3 S79°E 29 links

Circa 1930 G.F. DeLaMater R.L.S. #693 set a 4" pipe with brass cap for corner.

Circa 1930 G.F. DeLaMeter R.L.S. #693 set a 4" pipe with brass cap for corner

1947 Consumers Power Company R.O.W. map shows monument for corner.

1947 Consumers Power Company R.O.W. map shows monument for corner.

1964 Michigan Consolidated Gas R.O.W. map shows monument for corner.

1964 Michigan Consolidated Gas R.O.W. map shows monument for corner.

B. Description of corner evidence found and/or method applies in restoring or re-establishing corner:

I-6 Found 4" pipe with concrete fitting Consumers Power Company and Michigan Consolidated Gas stationing in section 14.

I-7 Found 4" pipe with concrete and brass cap fitting Consumers Power Company and Michigan Consolidated Gas stationing in section 14.

C. Description of monument for corner and accessories established to perpetuate locating the position of the corner:

I-6 Found 4" pipe filled with concrete  
Wit: 10" Oak N73°W 33.94'  
P. Pole N71°E 55.95'  
9" Oak N10°W 17.37'  
12" Oak S20°W 42.59'

I-7 Found 4" pipe with concrete and brass cap  
Wit: P. Pole S84°E 47.97'  
10" Oak S82°W 8.33'  
12" J. Pine N02°W 38.95'  
11" Oak S15°W 30.66'  
Centerline of road South 7'±

Signed by:

Carl T Kiiskila

Date:

4-4-07

Surveyor's Michigan License No.:

33981

