

LAND CORNER RECORDATION CERTIFICATE
Filing Requirement of Act 74, Mich. P.A. 1970 as Amended

For corners in

<u>Iron</u> <small>(County)</small>	Located In:	Corner Code #	
1. Public Land Survey	T <u>41N</u> R <u>32W</u>	<u>H2</u>	
	T _____ R _____	_____	
	T _____ R _____	_____	
	S _____ T _____ R _____	_____	
2. Property Controlling in Section	S <u>4</u> T <u>41N</u> R <u>32W</u>	<u>14</u>	
	S _____ T _____ R _____	_____	
3. Miscellaneous Property in Sec.	S _____ T _____ R _____	_____	
	S _____ T _____ R _____	_____	

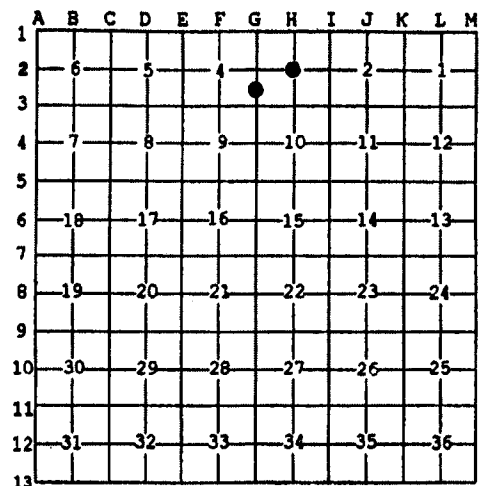
Register of Deeds Stamp & File Number

4. Lot No. _____, Recorded Plat _____
 5. Private Claims _____

Sep 13 2006

I, Stephan J. Szyszkoski, in a field survey on _____, 20____ do hereby state that under requirements of P.A. 74, Michigan P.A. of 1970, the corner points mentioned in lines 1 and 2 above were in conformance with regulations and rules therefore as required in the current manual of survey instructions of the United States Department of the Interior, Bureau of Land Management or by a decree of a Court of Law and /or that the corner points mentioned in lines 3, 4 and 5 above were in conformance with the rules of the Michigan Board of Land Surveyors or by a Decree of a Court of Law; established, re-established, monumented, recovered, found as expressed below:

NOTE: Not more than 2 corners, all in the same town and range, may be recorded on this certificate.



A. Description of original monument and accessories and/or subsequent restoration:

(H2) Center of Section 3. Not established in the original survey.
 (14-Sec. 4) South 1/16 corner between Sections 3 and 4. 1978 - Established by A.O.Enger, RLS midway and on line between Section and Quarter corners. Set 1"IDx36" iron pipe with 3 3/4" aluminum cap. Witnesses: Red Maple 9 N58W 41.6', Red Maple 8 N65E 17.1'.

B. Description of corner evidence found and/or method applied in restoring or reestablishing corner:

(H2) Established the corner at the intersection of straight lines connecting opposite 1/4 corners.
 (14-Sec. 4) Recovered the 1978 monument in good condition and at record bearing and distance from both 1978 BTs, in good condition. My measurements show that the monument is located 0.12' from the midpoint position intended in 1978 and I accept the monument as a careful and faithful determination of the position of the corner.

C. Description of monument for corner and accessories established to perpetuate locating the position of the corner:

(H2) Set 1"IDx32" I.pipe with 4" alum. MDNR cap. Set measuring nails in: 9" Maple N45E 45.4' mrkd "C1/4 BT" 7" Maple East 28.4' do 9" Oak South 45.8' do 9" twin Maple N41W 49.9' do Set sq'd cedar post adjacent. Bearings are magnetic. Distances are to nail with tag.	(14) Fd. 1"ID I.pipe with 3 3/4" alum. MDNR cap. Set measuring nails in: 9" Maple N53W 41.8' old blazes * 11" Maple N70E 17.5' do * 10" Oak S13W 39.2' mrkd "1/16S BT" 10" Oak S79W 40.1' do Set sq'd J.Pine post adjacent. Bearings are magnetic. Distances are to nail with tag. * denotes 1978 BT.
--	---



Signed by Stephan J. Szyszkoski
 Surveyor's Michigan License No. 33986

Date 9/26/06

For the Michigan Department of Natural Resources, Office of Land and Facilities