

✓  
MICHIGAN  
DEPARTMENT OF CONSERVATION  
FORESTRY DIVISION

# LAND CORNER RECORD

T. 42 & 43 N.R. 31W

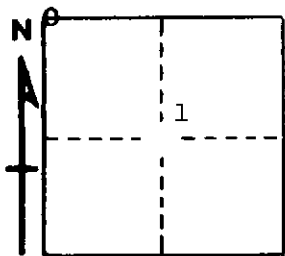
Iron \_\_\_\_\_ COUNTY

DESCRIPTION OF CORNER Section corner for sections 35/36 - T43N-R31W  
2/1 - T42N-R31W

CORNER MONUMENT 1" iron pipe with 4" aluminum cap

DATE MONUMENT PLACED AND WITNESSED 12/1/67 - F. J. Bray with K. Sackett

WITNESSES TO CORNER..... 12" twin cedar (S 36) (N.B.T.) N 49° E, 51 links



9" red pine (S 35) (N.B.T.) N 83° W, 82½ links

5" red pine (S 1) (N.B.T.) S 35° E, 38½ links

AND \_\_\_\_\_

CIRCLE CORNER REGISTERED

**DESCRIPTION IN DETAIL AS TO HOW CORNER WAS LOCATED AND IDENTIFIED OR RESTORED.**

Replaced from 3 pine stumps which check good for bearings and distances. All stumps badly burned. Stump to NE has notch and overgrowth in notch. Overgrowth of face on stump to NW. Overgrowth and axe marks on stump to SW.

**SURVEYOR'S SEAL**

SIGNED Frank J. Bray DATE 2/28/68  
REGISTERED LAND SURVEYOR  
Frank J. Bray