

✓

MICHIGAN
DEPARTMENT OF CONSERVATION
FORESTRY DIVISION

LAND CORNER RECORD

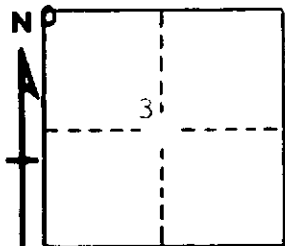
T. 42 & 43 N.R. 31 W

DESCRIPTION OF CORNER Section corner for sections Iron COUNTY
33/34 - T43N-R31W
4/3 - T42N-R31W

CORNER MONUMENT 1" iron pipe with 4" aluminum cap

DATE MONUMENT PLACED AND WITNESSED 12/1/67 - F. J. Bray with K. Sackett

WITNESSES TO CORNER..... 22" red pine (S 34) (N.B.T.) N 87° E, 148 links



8" spruce (S 3) (N.B.T.) S 14° E, 37 links

Burnt blazed cedar stump N 70° W, 07 links

AND

CIRCLE CORNER REGISTERED

DESCRIPTION IN DETAIL AS TO HOW CORNER WAS LOCATED AND IDENTIFIED OR RESTORED.

This corner was replaced from 3 pine stumps and down cedar all in proper bearing and distance. Stump to SE has notch and portion of face visible. Stub to NW has overgrowth of face. Stump bottom to SW+ down cedar to NE. All are badly burned and in poor condition.

SURVEYOR'S SEAL

SIGNED Frank J. Bray DATE 2/28/68
REGISTERED LAND SURVEYOR
Frank J. Bray