

✓  
MICHIGAN  
DEPARTMENT OF CONSERVATION  
FORESTRY DIVISION

# LAND CORNER RECORD

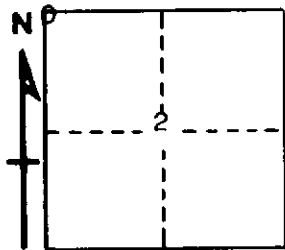
T.  $\frac{43}{42}$  N.R. 31 W

DESCRIPTION OF CORNER Section corner for sections  $\frac{34}{35}$  - T<sup>4</sup>3N-R31W  
 $\frac{3}{2}$  - T<sup>4</sup>2N-R31W Iron COUNTY

CORNER MONUMENT 1" iron pipe with 4" aluminum cap.

DATE MONUMENT PLACED AND WITNESSED 12/11/67 - F. J. Bray

WITNESSES TO CORNER..... 24" red pine (S 34 N.B.T.) N 56° W, 95 links



18" Twin red pine (S 2 N.B.T.) S 33° E, 51 links

22" red pine (S 3 N.B.T.) S 54° W, 65 links

AND

CIRCLE CORNER REGISTERED

**DESCRIPTION IN DETAIL AS TO HOW CORNER WAS LOCATED AND IDENTIFIED OR RESTORED.**

This corner was re-established by placing on line and single proportioned distance between section corners. One mile to East and to West. Badly burned stumps to NW and SW and depression to SE check well for distances but not too well for bearings. Down stump to NE.

**SURVEYOR'S SEAL**

SIGNED Frank J. Bray DATE 2/28/68  
REGISTERED LAND SURVEYOR  
Frank J. Bray