

✓
MICHIGAN
DEPARTMENT OF CONSERVATION
FORESTRY DIVISION

LAND CORNER RECORD

T. 42 N. R. 31W

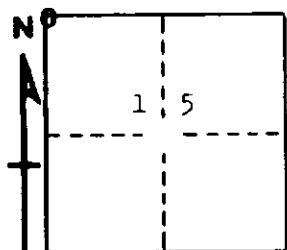
Iron COUNTY

DESCRIPTION OF CORNER Section corner for sections $\frac{9}{10}$
 $\frac{16}{15}$

CORNER MONUMENT 3" x 3" Wisconsin and Michigan Power Company monument set
in concrete.

DATE MONUMENT PLACED AND WITNESSED 12/18/67 - F. J. Bray

WITNESSES TO CORNER..... 7" Spruce (S.9) (N.B.T.) N 74° W, 45½ links



12" Spruce (S.10)(N.B.T.) N 34° E, 35½ links

9" Spruce (S.15)(N.B.T.) S 49° E, 70 links

AND

CIRCLE CORNER REGISTERED

DESCRIPTION IN DETAIL AS TO HOW CORNER WAS LOCATED AND IDENTIFIED OR RESTORED.

This corner was set by Wisconsin and Michigan Power Company. 1" iron pipe along side of monument.

SURVEYOR'S SEAL

SIGNED

Frank J. Bray

DATE 2/28/68

REGISTERED LAND SURVEYOR
Frank J. Bray