

✓

MICHIGAN
DEPARTMENT OF CONSERVATION
FORESTRY DIVISION

LAND CORNER RECORD

T. 42 N. R. 31W

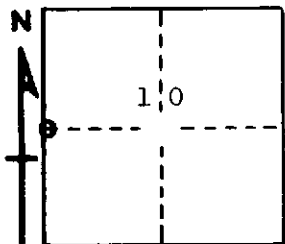
Iron COUNTY

DESCRIPTION OF CORNER 1/4 corner for sections 9/10

CORNER MONUMENT 3" x 3" Wisconsin and Michigan Power Co. brass monument set in concrete.

DATE MONUMENT PLACED AND WITNESSED 12/18/67 - F. J. Bray

WITNESSES TO CORNER..... 7" Tamarack (1/4 S)(NBT) S 08° E, 12½ links



6" Tamarack (1/4 S)(NBT) N 40° E, 34 links

8" Spruce (1/4 S)(NBT) N 58° W, 19 links

AND

CIRCLE CORNER REGISTERED

DESCRIPTION IN DETAIL AS TO HOW CORNER WAS LOCATED AND IDENTIFIED OR RESTORED.

Set by Wisconsin and Michigan Power Co. 1" iron pipe along side of monument.

SURVEYOR'S SEAL

SIGNED Frank J. Bray DATE 2/28/68
REGISTERED LAND SURVEYOR
Frank J. Bray