

✓

MICHIGAN  
DEPARTMENT OF CONSERVATION  
FORESTRY DIVISION

# LAND CORNER RECORD

T.  $\frac{43}{42}$  N. R. 31W

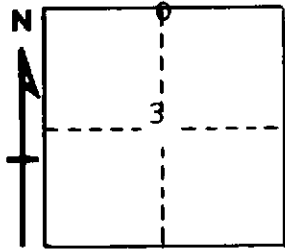
Iron COUNTY

DESCRIPTION OF CORNER 1/4 corner for sections  $\frac{34}{3}$  - T43N-R31W  
3 - T42N-R31W

CORNER MONUMENT 1" iron pipe with 4" aluminum cap.

DATE MONUMENT PLACED AND WITNESSED 12/14/67 - F. J. Bray

WITNESSES TO CORNER..... 12" red pine (1/4 S) (N.B.T.) N 87° E, 126 links



9" aspen (1/4 S) (N.B.T.) West, 22 links

AND

CIRCLE CORNER REGISTERED

**DESCRIPTION IN DETAIL AS TO HOW CORNER WAS LOCATED AND IDENTIFIED OR RESTORED.**

This corner was placed midway and on line between section corners 1/2 mile to east and to west. No original evidence found.

**SURVEYOR'S SEAL**

SIGNED Frank J. Bray DATE 2/28/68  
REGISTERED LAND SURVEYOR  
Frank J. Bray