

✓

**MICHIGAN  
DEPARTMENT OF CONSERVATION  
FORESTRY DIVISION**

# LAND CORNER RECORD

T. 42 N.R. 31W

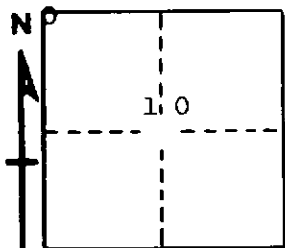
Iron COUNTY

DESCRIPTION OF CORNER Section corner for sections  $\frac{4}{3}$   
 $\frac{9}{10}$

CORNER MONUMENT 3" x 3" Wisconsin and Michigan Power Company brass monument set  
in concrete.

DATE MONUMENT PLACED AND WITNESSED 12/14/67 - F. J. Bray

WITNESSES TO CORNER..... 4" red pine (N.B.T.) N 34° E, 84½ links



8" red pine (Sec.10) (N.B.T.) S 77° E, 186½ links

4" red pine (N.B.T.) S 34° W, 110½ links

AND

CIRCLE CORNER REGISTERED

**DESCRIPTION IN DETAIL AS TO HOW CORNER WAS LOCATED AND IDENTIFIED OR RESTORED.**

This corner was set by Wisconsin and Michigan Power Company. 1" iron pipe found along side of monument. Old wood post down.

**SURVEYOR'S SEAL**

SIGNED Frank J. Bray DATE 2/28/68  
REGISTERED AND SURVEYOR  
Frank J. Bray