

LAND CORNER RECORDATION CERTIFICATE
Filing Requirement of Act 74, Mich. P.A. 1970

For corners in
Iron _____
(County)

Located in: _____ Corner Code # _____

1. Public Land Survey T 42N R 31W CB
T 42N R 31W A7
T _____ R _____
T _____ R _____

2. Property Controlling in Section S _____ T _____ R _____
S _____ T _____ R _____

3. Miscellaneous Property in Sec. S _____ T _____ R _____
S _____ T _____ R _____

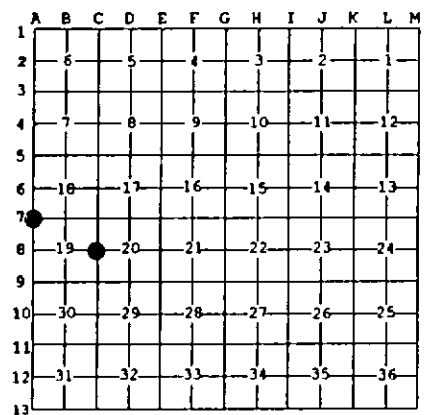
Register of Deeds Stamp & File Number

4. Lot No. _____, Recorded Plat _____
5. Private Claims _____

A7 Aug 14 1996
C8 Aug 13 1996

I, Stephan J. Szyszkoski, in a field survey on _____, 19____ do hereby state that under requirements of P.A. 74, Michigan P.A. of 1970, the corner points mentioned in lines 1 and 2 above were in conformance with regulations and rules therefore as required in the current manual of survey instructions of the United States Department of the Interior, Bureau of Land Management or by a decree of a Court of Law and /or that the corner points mentioned in lines 3, 4 and 5 above were in conformance with the rules of the Michigan Board of Land Surveyors or by a Decree of a Court of Law; established, re-established, monumented, recovered, found as expressed below.

NOTE: Not more than 2 corners, all in the same town and range, may be recorded on this certificate.



A. Description of original monument and accessories and/or subsequent restoration:
 (C8) Quarter corner common to Sections 19-20. Corner established in 1849 by John Burt: "40.00 Set maple qr. sect. post W. Pine 24 S26E 20, Y. Pine 20 N20W 28". Records from Wisconsin Michigan Power Company (now Wisconsin Electric Power Company) in the form of a map titled PROPERTY MARKERS PAINT AND MICHIGAN RIVERS map # G-210-GG dated 4-10-1947 states in regard to this corner: "No evidence. Set 2640' W. of corner. Concrete corner. 12" W. Pine stump N35W 22.9', 6" Poplar S61E 15.0', 3" Poplar S40W 24.8".
 (A7) Corner common to Sections 18-19 T42N-R31W and Sections 13-24 T42N-R32W. Corner previously recorded by in 1985 Keith Sackett, RLS: "Original monument and accessories not found. Found 2 1/2" I.D. iron pipe set by Murry Ates in 1953. 10" Cedar N42E 23.5', 8" Balsam S10E 18.5', 12" Spruce N56W 31.0'.

B. Description of corner evidence found and/or method applied in restoring or reestablishing corner:
 (C8) Original corner post and accessories not recovered. Found no evidence of the position of the original corner on the ground. Found a 7" truncated right rectangular pyramid shaped concrete monument with a 3" square brass tablet affixed in the top reading "Wisconsin Michigan Power Company 42-31 1/4 19/20". The witnesses noted above were recovered as follows: Pine stump with small nail facing the corner N34W 22.9' to center of stump, 12" poplar stub S44W 24.2' to near face with old scar. No evidence of the second poplar witness. Determined the monument to be 0.53' south and 0.65' east of the proportionate position between adjacent section corners north and south. Accepted the monument as a careful and faithful reestablishment of the position of the original corner. Distances to corners north and south were found to be 2635.78' and 2634.72', respectively.
 (A7) Found a 2 1/2" iron pipe as described, projecting 1.5', in good condition, and at record bearing and distance from the cedar and balsam NBTs marked in 1985. Left the monument in place and marked two new accessories as described below.

C. Description of monument for corner and accessories established to perpetuate locating the position of the corner:
 (C8) Found WMPCO concrete monument
 Blazed and scribed the following new bearing trees:
 5" W. Spruce N28E 29.2' 1/4S NBT"
 11" W. Birch S58E 38.4' 1/4S NBT"
 5" W. Pine S62W 20.7' 1/4S NBT"
 7" W. Pine N55W 47.4' 1/4S NBT"
 Squared a 4" spruce stub N93W 1.0'.
 Bearings are magnetic.

(A7) Found 2 1/2" iron pipe
 Blazed and scribed the following new bearing trees:
 11" Maple S43W 46.0' S24 NBT"
 3" R. Pine N77W 23.4' S13 NBT"
 Placed a 3" spruce post adjacent.
 Bearings are magnetic.



Signed by Stephan J. Szyszkoski Date 9-9-96
 Surveyor's Michigan License No. 33986

For the Michigan Department of Natural Resources - Forest Management Division