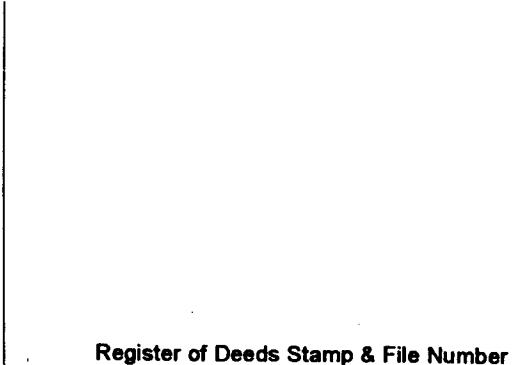


**LAND CORNER RECORDATION CERTIFICATE**  
**Filing Requirement of Act 74, Mich. P.A. 1970**

For corners in

Iron	Located In:	Corner Code #
(County)		
1. Public Land Survey	T <u>42N</u> R <u>32W</u>	<u>E10</u>
	T <u>42N</u> R <u>32W</u>	<u>E11</u>
	T _____ R _____	_____
	T _____ R _____	_____
2. Property Controlling in Section	S _____ T _____ R _____	_____
	S _____ T _____ R _____	_____
3. Miscellaneous Property in Sec.	S _____ T _____ R _____	_____
	S _____ T _____ R _____	_____

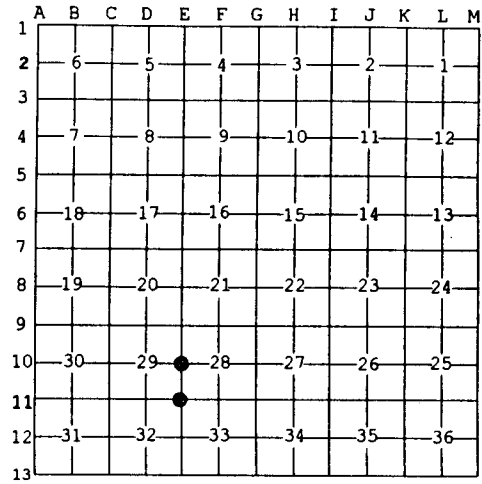


4. Lot No. \_\_\_\_\_, Recorded Plat \_\_\_\_\_  
 5. Private Claims \_\_\_\_\_

Jul 30 2003

I, Stephan J. Szyszkoski, in a field survey on \_\_\_\_\_, 20\_\_ do hereby state that under requirements of P.A. 74, Michigan P.A. of 1970, the corner points mentioned in lines 1 and 2 above were in conformance with regulations and rules therefore as required in the current manual of survey instructions of the United States Department of the Interior, Bureau of Land Management or by a decree of a Court of Law and /or that the corner points mentioned in lines 3, 4 and 5 above were in conformance with the rules of the Michigan Board of Land Surveyors or by a Decree of a Court of Law; established, re-established, monumented, recovered, found as expressed below:

**NOTE: Not more than 2 corners, all in the same town and range, may be recorded on this certificate.**



**A. Description of original monument and accessories and/or subsequent restoration:**  
 (E10) Quarter corner common to Sections 28-29. Reestablished in 1971 by A.O.Enger, RLS, midway and on line between Section corners. Set 1"IDx36" I.pipe with 4" alum. cap. Aspen 7 S10W 20.4', Aspen 6 S74W 7.0', Aspen 6 N74E 11.8'  
 (E11) Corner common to Sections 28-29-32-33. Reestablished by double proportionate measurement in 1971 by A.O.Enger, RLS. Set 1"IDx36" I.pipe with 4" aluminum cap. Red Oak 8 N19W 70.5', Red Oak 9 S1.5W 78.5', Red Oak 6 N27E 58.2'

**B. Description of corner evidence found and/or method applied in restoring or reestablishing corner:**  
 (E10) Found the 1971 monument, set firmly but with cap broken off, at record bearing and distance from the remaining NBT Aspen NE, now a rotting stump. The other NBTs were not recovered. Found a 1/2" rebar projecting 3' adjacent to the monument. The monument is 0.26' East and 0.90' north of the record position between Section corners. Accepted the corner position as found.  
 (E11) Found the 1971 monument in good condition, and at record bearing and distance from the R.Oak NBTs SW and NW, both in good condition with overgrown blazes. The R.Oak NE was not recovered. Accepted the corner position as found. The corner falls in a clearing made for an overhead electrical power line.

**C. Description of monument for corner and accessories established to perpetuate locating the position of the corner:**  
 (E10) Found 1"ID I.pipe with stem of aluminum cap inside. Blazed, scribed, and set measuring nails in:  
 4" Aspen N40E 23.6'                      "1/4S NBT"  
 4" Aspen S41E 7.4'                        do  
 6" Aspen S13E 34.2'                       do  
 8" Oak S05W 79.8'                        do  
 Set sq'd cedar post adjacent. Bearings are magnetic. Distances are to nail with tag.  
 (E11) Found 1"ID I.pipe with 4" alum. MI Dept. of Conservation cap. Blazed, scribed, and set measuring nails in:  
 13" Oak S03W 78.7' overgrown blazes  
 12" Oak N16W 70.9'                        do  
 10" dbl Oak N18E 42.5'                    "S28 NBT"  
 7" Oak S18E 59.5'                        "S33 NBT"  
 Bearings are magnetic. Distances are to nail with tag.



Signed by Stephan J. Szyszkoski Date 8/6/03  
 Surveyor's Michigan License No. 33986