

LAND CORNER RECORDATION CERTIFICATE
Filing Requirement of Act 74, Mich. P.A. 1970

For corners in

Iron

(County)

Located In:

Corner Code #

1. Public Land Survey	T 42N R 32W	E9
	T R	
	T R	
	T R	
2. Property Controlling in Section	S 29 T 42N R 32W	7
	S T R	
3. Miscellaneous Property in Sec.	S T R	
	S T R	

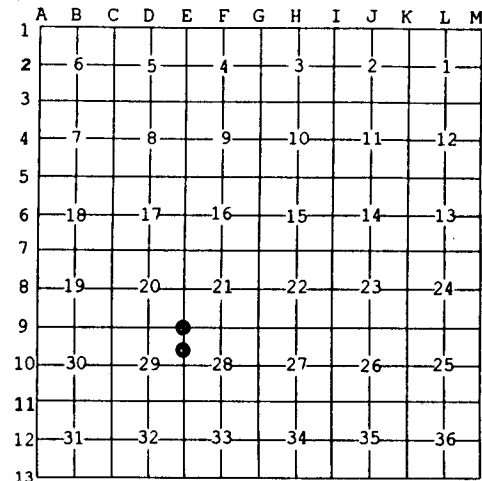
Register of Deeds Stamp & File Number

4. Lot No. _____, Recorded Plat _____
5. Private Claims _____

Jul 30 2003

I, Stephan J. Szyszkoski, in a field survey on _____, 20__ do hereby state that under requirements of P.A. 74, Michigan P.A. of 1970, the corner points mentioned in lines 1 and 2 above were in conformance with regulations and rules therefore as required in the current manual of survey instructions of the United States Department of the Interior, Bureau of Land Management or by a decree of a Court of Law and /or that the corner points mentioned in lines 3, 4 and 5 above were in conformance with the rules of the Michigan Board of Land Surveyors or by a Decree of a Court of Law; established, re-established, monumented, recovered, found as expressed below:

NOTE: Not more than 2 corners, all in the same town and range, may be recorded on this certificate.



A. Description of original monument and accessories and/or subsequent restoration:

(E9) Corner common to Sections 20-21-28-29. Reestablished in 1971 by A.O. Enger RLS by proportionate measurement. 1"IDx36" I.pipe with 4" alum. cap. Red Maple 5 N31E 19.6', W.Spruce 3 N50W 21.6', Aspen 7 S25W 10.6'
(7-Sec. 29) North 1/16 corner between Sections 28-29. Established in 1972 by A.O. Enger, RLS, midway and on line between reestablished Quarter and Section corners. Set 1"IDx36" I.pipe with 4" alum. cap. Aspen 8 N27W 85.3', J.Pine 6 S23.5W 75.7'

B. Description of corner evidence found and/or method applied in restoring or reestablishing corner:

(E9) Found the 1971 monument in good condition and at record bearing and distance from two of the 1971 NBTs: The Maple and Aspen were both recovered, the W. Spruce was not. Cut the Aspen to improve GPS visibility. Accepted the corner position as found and made new witnesses.
(7-Sec. 29) Recovered the 1972 monument in good condition and at record bearing and distance from the 2 NBTs, now both dead. The Aspen is a stump, the J.Pine is a dead stub with overgrown blazes visible. Found a 4x4 treated post and two 1/2" dia. rebar projecting 3', adjacent to the corner monument. The monument is 1.14' North of the record position between the reestablished US corners, and on the Section line. Accepted the corner position as found.

C. Description of monument for corner and accessories established to perpetuate locating the position of the corner:

(E9) Found 1"ID I.pipe with 4" alum. MI Dept. of Conservation cap. Blazed, scribed, and set measuring nails in: 10" Maple N30E 19.7' overgrown blazes 7" Maple S76E 37.5' "S28 NBT" 8" W.Pine S29E 38.9' do 6" Oak N66W 15.9' "S20 NBT" Set sq'd cedar post adjacent. Bearings are magnetic. Distances are to nail with tag.	(7) Found 1"ID I.pipe with 4" alum. MI Dept. of Conservation cap. Blazed, scribed, and set measuring nails in: 7" twin W.Spruce N27E 62.3' "1/16S BT" 7" J.Pine N42E 9.1' do 9" J.Pine S12W 78.0' do 8" J.Pine S76W 50.0' do Set a sq'd cedar post adjacent. Bearings are magnetic. Distances are to nail with tag.
---	--



Signed by Stephan J. Szyszkoski
Surveyor's Michigan License No. 33986

Date 8/6/03