

**LAND CORNER RECORDATION CERTIFICATE**  
**Filing Requirement of Act 74, Mich. P.A. 1970**

For corners in  
Iron

(County)

Located In:

Corner Code #

1. Public Land Survey	T <u>42N</u> R <u>32W</u>	<u>09</u>
	T <u>    </u> R <u>    </u>	<u>    </u>
	T <u>    </u> R <u>    </u>	<u>    </u>
	T <u>    </u> R <u>    </u>	<u>    </u>
2. Property Controlling in Section	S <u>29</u> T <u>42N</u> R <u>32W</u>	<u>14</u>
	S <u>    </u> T <u>    </u> R <u>    </u>	<u>    </u>
3. Miscellaneous Property in Sec.	S <u>    </u> T <u>    </u> R <u>    </u>	<u>    </u>
	S <u>    </u> T <u>    </u> R <u>    </u>	<u>    </u>

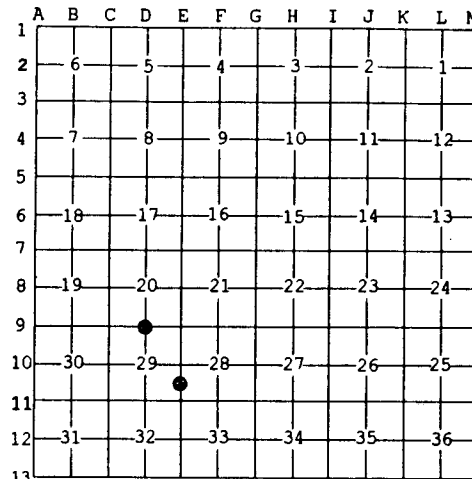
Register of Deeds Stamp & File Number

4. Lot No. \_\_\_\_\_, Recorded Plat \_\_\_\_\_  
 5. Private Claims \_\_\_\_\_

Jul 29 2003

I, Stephan J. Szyszkoski, in a field survey on \_\_\_\_\_, 20\_\_ do hereby state that under requirements of P.A. 74, Michigan P.A. of 1970, the corner points mentioned in lines 1 and 2 above were in conformance with regulations and rules therefore as required in the current manual of survey instructions of the United States Department of the Interior, Bureau of Land Management or by a decree of a Court of Law and /or that the corner points mentioned in lines 3, 4 and 5 above were in conformance with the rules of the Michigan Board of Land Surveyors or by a Decree of a Court of Law; established, re-established, monumented, recovered, found as expressed below:

NOTE: Not more than 2 corners, all in the same town and range, may be recorded on this certificate.



**A. Description of original monument and accessories and/or subsequent restoration:**

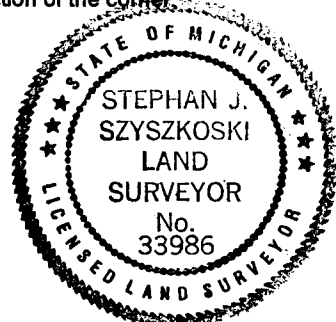
(09) Quarter corner common to Sections 20-29. Reestablished in 1972 by A.O. Enger, midway and on line between Section corners. 1" IDx36" I. pipe with 4" aluminum cap. Red Oak 9 N74W 14.4', Red Maple 6 N60E 18.2'  
 (14-Sec. 29) South 1/16 corner between Sections 28-29. Established in 1971 by A.O. Enger midway and on line between reestablished Quarter and Section corners. Set 1" IDx36" I. pipe with 4" alum. cap. J. Pine 8 S11W 29.6', Aspen 6 N84W 39.1'

**B. Description of corner evidence found and/or method applied in restoring or reestablishing corner:**

(09) Recovered the 1972 monument in good condition, at record bearing and distance from the Maple NBT, 0.25' South and 0.46' East of the record position between Section corners. Accepted the corner position as found.  
 (14-Sec. 29) Recovered the 1971 monument in good condition, at record bearing and distance from the 1972 NBTs, 0.50' East and 0.63' South of the record position between the reestablished US corners. Accepted the corner position as found.

**C. Description of monument for corner and accessories established to perpetuate locating the position of the corner:**

(09) Found 1" ID I. pipe with 4" alum. MI Dept. of Conservation cap. Blazed, scribed, and set measuring nails in: 10" Maple N63E 18.5' overgrown blazes 11" Oak S58E 21.6' "1/4S NBT" 12" Oak S02W 27.1' do 9" Oak S79W 23.3' do Set sq'd cedar post adjacent. Bearings are magnetic. Distances are to nail with tag.	(14) Found 1" ID I. pipe with 4" alum. MI Dept. of Conservation cap. Blazed, scribed, and set measuring nails in: 10" R. Pine S02E 69.7' "1/16S BT" 11" J. Pine S10W 29.8' scribing visible 10" Aspen N81W 39.4' do 4" Oak S62W 53.4' "1/16S BT" Set sq'd cedar post adjacent. Bearings are magnetic. Distances are to nail with tag.
--	--



Signed by Stephan J. Szyszkoski  
 Surveyor's Michigan License No. 33986

Date 8/6/03