

LAND CORNER RECORDATION CERTIFICATE
Filing Requirement of Act 74, Mich. P.A. 1970 as Amended

For corners in

Iron	Located In:	Corner Code #
<small>(County)</small>		
1. Public Land Survey	T ___ R ___	_____
	T ___ R ___	_____
	T ___ R ___	_____
2. Property Controlling in Section	S ___ T ___ R ___	_____
	S 10 T 42N R 32W	1
	S 10 T 42N R 32W	4
3. Miscellaneous Property in Sec.	S ___ T ___ R ___	_____
	S ___ T ___ R ___	_____
4. Lot No. _____, Recorded Plat _____		
5. Private Claims		

Register of Deeds Stamp & File
Number

	A	B	C	D	E	F	G	H	I	J	K	L	M
1													
2	6		5		4			3		2			1
3								●					
4	7		8		9			●		10		11	12
5													
6	18		17		16			15		14			13
7													
8	19		20		21			22		23			24
9													
10	30		29		28			27		26			25
11													
12	31		32		33			34		35			36
13													

May 30 2006

I, Stephan J. Szyszkoski, in a field survey on _____, 20____ do hereby state that under requirements of P.A. 74, Michigan P.A. of 1970, the corner points mentioned in lines 1 and 2 above were in conformance with regulations and rules therefore as required in the current manual of survey instructions of the United States Department of the Interior, Bureau of Land Management or by a decree of a Court of Law and /or that the corner points mentioned in lines 3, 4 and 5 above were in conformance with the rules of the Michigan Board of Land Surveyors or by a Decree of a Court of Law; established, re-established, monumented, recovered, found as expressed below:

NOTE: Not more than 2 corners, all in the same town and range, may be recorded on this certificate.

A. Description of original monument and accessories and/or subsequent restoration:

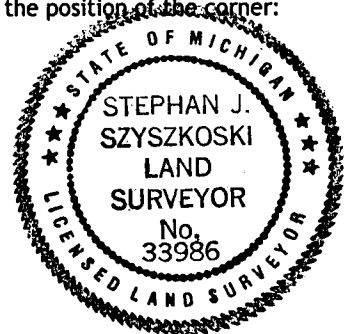
- (1-Sec. 10) West 1/16 corner between Sections 3 and 10. Not established in the original survey. Found no subsequent record.
- (4-Sec. 10) Northwest 1/16 corner, Section 10. Not established in the original survey. Found no subsequent record.

B. Description of corner evidence found and/or method applied in restoring or reestablishing corner:

- (1-Sec. 10) Established the corner midway and on the section line between Section corner 1316.57' West and Quarter corner 1316.57' East.
- (4-Sec. 10) Established the corner at the intersection of straight lines connecting opposite 1/16 corners.

C. Description of monument for corner and accessories established to perpetuate locating the position of the corner:

- | | |
|---|---|
| (1) Set 1"IDx32" I.pipe with 4" alum.
MDNR cap. Set measuring nails in:
10" J.Pine S14W 40.7' mrkd "1/16S BT"
12" J.Pine S73W 27.5' do
9" J.Pine N49W 37.2' do
12" J.Pine N30W 12.1' do
Set sq'd J.Pine post adjacent. Bearings
are magnetic. Distances are to nail
with tag. | (4) Set 1"IDx32" I.pipe with 4" alum.
MDNR cap. Set measuring nails in:
7" R.Pine N48E 3.2' mrkd "1/16S BT"
8" R.Pine S87E 38.7' do
11" R.Pine South 23.7' do
7" R.Pine S77W 29.7' do
Set sq'd R.Pine post adjacent. Bearings
are magnetic. Distances are to nail
with tag. |
|---|---|



Signed by Stephan J. Szyszkoski
 Surveyor's Michigan License No. 33986

Date 7/27/06

For the Michigan Department of Natural Resources, Office of Land and Facilities