

STATE OF MICHIGAN
DEPARTMENT
OF
NATURAL RESOURCES

LAND CORNER RECORD

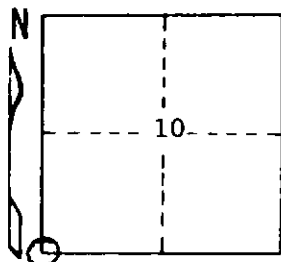
Iron COUNTY
T 42N R 32W

DESCRIPTION OF CORNER Section Corner 9, 10, 15, and 16

CORNER MONUMENT 1" I.D. x 36" iron pipe with 4" aluminum cap

DATE MONUMENT PLACED AND WITNESSED June 15, 1971

WITNESSES TO CORNER..... (Corner falls in a jack pine sapling stand; no trees large enough nearby to make practical witnesses)



AND

CIRCLE CORNER REGISTERED

DESCRIPTION IN DETAIL AS TO HOW CORNER WAS LOCATED AND IDENTIFIED OR RESTORED.

Found a 2" I.D. x 55" iron pipe at approximate corner position, set by unknown party. As the found pipe falls only 2.5 feet from its calculated position from corners to N and S of it, it was accepted as reasonably representing the section corner as originally established.

SURVEYOR'S SEAL

DISTRIBUTION:

Forestry Division, Lansing

Area Forester

District Surveyor

SIGNED

Arthur O. Enger
REGISTERED LAND SURVEYOR
Arthur O. Enger

DATE September 20, 1972