

STATE OF MICHIGAN
DEPARTMENT
OF
NATURAL RESOURCES

LAND CORNER RECORD

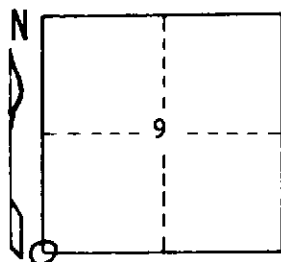
Iron COUNTY
T 42N R 32W

DESCRIPTION OF CORNER Section Corner 8, 9, 16, and 17

CORNER MONUMENT 1" I.D. x 36" iron pipe with 4" aluminum cap

DATE MONUMENT PLACED AND WITNESSED June 21, 1971

WITNESSES TO CORNER..... Aspen 4 N2½°E (mag.) 8.9 ft. "S9, NBT"



Aspen 3 N60°W (mag.) 15.0 ft. "S8, NBT"

1½" I.D. iron pipe N74½°E (mag.) 33.7 ft.

AND

CIRCLE CORNER REGISTERED

DESCRIPTION IN DETAIL AS TO HOW CORNER WAS LOCATED AND IDENTIFIED OR RESTORED.

Found a 1½" I.D. iron pipe N74½°E .511 ch. from corner, set by unknown party from unknown evidence. Could find no physical or measurement evidence to support the found pipe as being at the site of the original corner. Nothing found to indicate the likelihood of this much misalignment from surrounding corners in the original survey. Therefore, re-established the corner by single proportionate measurement on line between section corners 1 mile N and 1 mile S, according to the method used in the original government survey. Had double proportionate measurement been used, corner would have fallen 12.5 feet west, rather than to east, as is the found pipe.

SURVEYOR'S SEAL

DISTRIBUTION:

Forestry Division, Lansing

Area Forester

District Surveyor

SIGNED

Arthur O. Enger
REGISTERED LAND SURVEYOR
Arthur O. Enger

DATE September 20, 1972