

STATE OF MICHIGAN
DEPARTMENT
OF
NATURAL RESOURCES

LAND CORNER RECORD

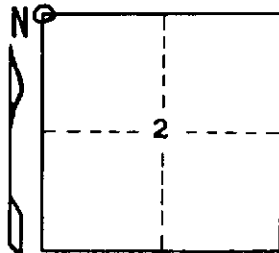
Iron COUNTY
T 42-43 N R 32 W

DESCRIPTION OF CORNER Section corner 2, 3, 34, and 35

CORNER MONUMENT Square brass description marker embedded in concrete base by
Wisconsin-Michigan Power Company

DATE MONUMENT PLACED AND WITNESSED October 12, 1970

WITNESSES TO CORNER..... Black Spruce 7 S11°E (magnetic) 12.7 ft. "S2, NBT"



Tamarack 9 S39°W (magnetic) 25.2 ft. "S3, NBT"

AND

CIRCLE CORNER REGISTERED

DESCRIPTION IN DETAIL AS TO HOW CORNER WAS LOCATED AND IDENTIFIED OR RESTORED.

Survey records of WMPC indicate monument was set at site of a squared wood post with two original BT's present. No BT's identifiable at this date, but a burned stump lies to the NE at the proper direction and distance as described for one of the original BT's. Corner lies on E margin of swamp as per original government notes, and distance S to Paint River agrees well with the original record. A fence runs N from a point about 5 ft. E. of monument.

SURVEYOR'S SEAL

SIGNED Arthur C. Enger DATE April 29, 1971
REGISTERED LAND SURVEYOR

DISTRIBUTION:

County Courthouse
Area Forester (Regions I & II)
District or Region Surveyor
Forestry Div., Lansing

R 4047
Rev. 10/68