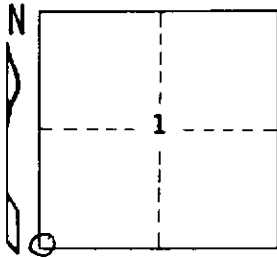


STATE OF MICHIGAN
DEPARTMENT
OF
NATURAL RESOURCES

LAND CORNER RECORD

Iron COUNTY
T 42N R 32W

DESCRIPTION OF CORNER Section Corner 1, 2, 11, and 12
CORNER MONUMENT Concrete marker with square brass plate (by WMPCo.)
DATE MONUMENT PLACED AND WITNESSED October 12, 1970
WITNESSES TO CORNER..... Aspen 5 N39°E (mag.) 11.4 ft. "S1, NBT"



No other trees or objects near.

AND

CIRCLE CORNER REGISTERED

DESCRIPTION IN DETAIL AS TO HOW CORNER WAS LOCATED AND IDENTIFIED OR RESTORED.

Found a WMPCo. concrete marker with square brass plate in place.
Company records indicate they found two stumps checking as original BT's
when monument was placed in 1940's.

Corner accepted as found, on the basis of the record. Found a trace of
pine stump near position of NW BT and darkened soil in position of SE BT.
Corner bears S89°51'W 80.276 ch. from a probably original corner on the
township boundary (record distance is 80.10 ch.), and distance south to a
former brook crossing (now flooded) appears compatible with the record.

SURVEYOR'S SEAL

DISTRIBUTION:

SIGNED

Arthur O. Enger
REGISTERED LAND SURVEYOR

DATE

May 31, 1972

Arthur O. Enger

County Courthouse
Area Forester (Regions I & II)
District or Region Surveyor
Forestry Div., Lansing

R 4047
Rev. 10/68