

STATE OF MICHIGAN  
DEPARTMENT  
OF  
NATURAL RESOURCES

LAND CORNER RECORD

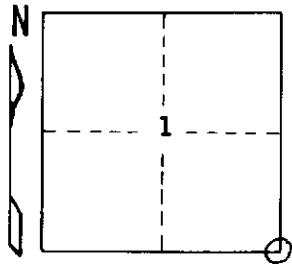
Iron COUNTY  
T 42N R 31-32W

DESCRIPTION OF CORNER Section Corner 1, 6,7, and 12

CORNER MONUMENT Replaced 2" iron pipe with a 1" I.D. x 36" iron pipe with 4" aluminum cap

DATE MONUMENT PLACED AND WITNESSED October 12, 1970

WITNESSES TO CORNER..... Jack Pine 10 S25°W (mag.) 147.9 ft. "S12, NBT"



B. Spruce 4 N25°W (mag.) 66.0 ft. "S1, NBT"

AND

CIRCLE CORNER REGISTERED

DESCRIPTION IN DETAIL AS TO HOW CORNER WAS LOCATED AND IDENTIFIED OR RESTORED.

Found a 2" I.D. iron pipe and an old 3"x3" squared post in place, set by unknown party. Corner perpetuated as found. Position checks well with marsh edges to N and S (east not checked). Found a rotted and burned Y. Pine stump S30½°W 231 lks. from corner, corresponding in species, size, distance, and bearing with one of the recorded original BT's. Distance to nearest known original corner to west checks within 22 links and 10 minutes of bearing with the record. (Corner 5 miles W).

SURVEYOR'S SEAL

DISTRIBUTION:

SIGNED

*Arthur O. Enger*  
REGISTERED LAND SURVEYOR  
Arthur O. Enger

DATE May 31, 1972

County Courthouse  
Area Forester (Regions I & II)  
District or Region Surveyor  
Forestry Div., Lansing

R 4047  
Rev. 10/68